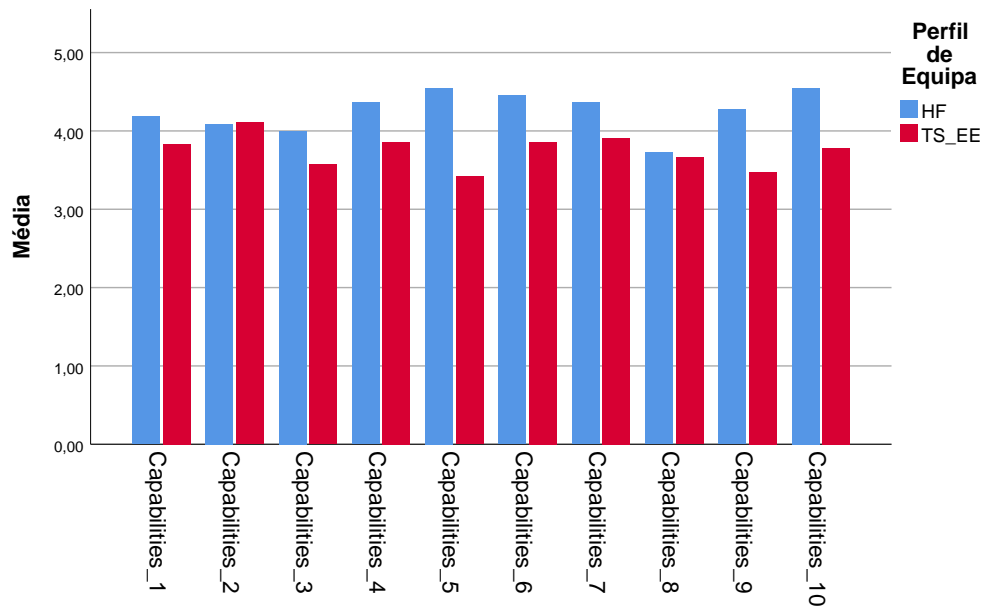


Barra em Cluster: Médias de Capabilities por Perfil de Equipa



Correlations

		Capabilities_1	Capabilities_2	Capabilities_3
Capabilities_1	Pearson Correlation	1	,672**	,547**
	Sig. (2-tailed)		,000	,000
	N	76	76	76
Capabilities_2	Pearson Correlation	,672**	1	,571**
	Sig. (2-tailed)	,000		,000
	N	76	76	76
Capabilities_3	Pearson Correlation	,547**	,571**	1
	Sig. (2-tailed)	,000	,000	
	N	76	76	76
Capabilities_4	Pearson Correlation	,765**	,617**	,514**
	Sig. (2-tailed)	,000	,000	,000
	N	76	76	76
Capabilities_5	Pearson Correlation	,546**	,494**	,486**
	Sig. (2-tailed)	,000	,000	,000
	N	76	76	76
Capabilities_6	Pearson Correlation	,616**	,433**	,430**
	Sig. (2-tailed)	,000	,000	,000
	N	76	76	76

### Correlations

		Capabilities_4	Capabilities_5	Capabilities_6
Capabilities_1	Pearson Correlation	,765**	,546**	,616**
	Sig. (2-tailed)	,000	,000	,000
	N	76	76	76
Capabilities_2	Pearson Correlation	,617**	,494**	,433**
	Sig. (2-tailed)	,000	,000	,000
	N	76	76	76
Capabilities_3	Pearson Correlation	,514**	,486**	,430**
	Sig. (2-tailed)	,000	,000	,000
	N	76	76	76
Capabilities_4	Pearson Correlation	1	,538**	,672**
	Sig. (2-tailed)		,000	,000
	N	76	76	76
Capabilities_5	Pearson Correlation	,538**	1	,448**
	Sig. (2-tailed)	,000		,000
	N	76	76	76
Capabilities_6	Pearson Correlation	,672**	,448**	1
	Sig. (2-tailed)	,000	,000	
	N	76	76	76

### Correlations

		Capabilities_7	Capabilities_8	Capabilities_9
Capabilities_1	Pearson Correlation	,491**	,562**	,514**
	Sig. (2-tailed)	,000	,000	,000
	N	76	76	76
Capabilities_2	Pearson Correlation	,556**	,601**	,412**
	Sig. (2-tailed)	,000	,000	,000
	N	76	76	76
Capabilities_3	Pearson Correlation	,624**	,550**	,538**
	Sig. (2-tailed)	,000	,000	,000
	N	76	76	76
Capabilities_4	Pearson Correlation	,477**	,606**	,545**
	Sig. (2-tailed)	,000	,000	,000
	N	76	76	76
Capabilities_5	Pearson Correlation	,518**	,444**	,670**
	Sig. (2-tailed)	,000	,000	,000
	N	76	76	76
Capabilities_6	Pearson Correlation	,464**	,444**	,496**
	Sig. (2-tailed)	,000	,000	,000
	N	76	76	76

### Correlations

		Capabilities_10
Capabilities_1	Pearson Correlation	,545**
	Sig. (2-tailed)	,000
	N	76
Capabilities_2	Pearson Correlation	,552**
	Sig. (2-tailed)	,000
	N	76
Capabilities_3	Pearson Correlation	,454**
	Sig. (2-tailed)	,000
	N	76
Capabilities_4	Pearson Correlation	,549**
	Sig. (2-tailed)	,000
	N	76
Capabilities_5	Pearson Correlation	,574**
	Sig. (2-tailed)	,000
	N	76
Capabilities_6	Pearson Correlation	,534**
	Sig. (2-tailed)	,000
	N	76

### Correlations

		Capabilities_1	Capabilities_2	Capabilities_3
Capabilities_7	Pearson Correlation	,491**	,556**	,624**
	Sig. (2-tailed)	,000	,000	,000
	N	76	76	76
Capabilities_8	Pearson Correlation	,562**	,601**	,550**
	Sig. (2-tailed)	,000	,000	,000
	N	76	76	76
Capabilities_9	Pearson Correlation	,514**	,412**	,538**
	Sig. (2-tailed)	,000	,000	,000
	N	76	76	76
Capabilities_10	Pearson Correlation	,545**	,552**	,454**
	Sig. (2-tailed)	,000	,000	,000
	N	76	76	76

### Correlations

		Capabilities_4	Capabilities_5	Capabilities_6
Capabilities_7	Pearson Correlation	,477**	,518**	,464**
	Sig. (2-tailed)	,000	,000	,000
	N	76	76	76
Capabilities_8	Pearson Correlation	,606**	,444**	,444**
	Sig. (2-tailed)	,000	,000	,000
	N	76	76	76
Capabilities_9	Pearson Correlation	,545**	,670**	,496**
	Sig. (2-tailed)	,000	,000	,000
	N	76	76	76
Capabilities_10	Pearson Correlation	,549**	,574**	,534**
	Sig. (2-tailed)	,000	,000	,000
	N	76	76	76

### Correlations

		Capabilities_7	Capabilities_8	Capabilities_9
Capabilities_7	Pearson Correlation	1	,598**	,548**
	Sig. (2-tailed)		,000	,000
	N	76	76	76
Capabilities_8	Pearson Correlation	,598**	1	,569**
	Sig. (2-tailed)	,000		,000
	N	76	76	76
Capabilities_9	Pearson Correlation	,548**	,569**	1
	Sig. (2-tailed)	,000	,000	
	N	76	76	76
Capabilities_10	Pearson Correlation	,705**	,543**	,571**
	Sig. (2-tailed)	,000	,000	,000
	N	76	76	76

## Correlations

		Capabilities_10
Capabilities_7	Pearson Correlation	,705**
	Sig. (2-tailed)	,000
	N	76
Capabilities_8	Pearson Correlation	,543**
	Sig. (2-tailed)	,000
	N	76
Capabilities_9	Pearson Correlation	,571**
	Sig. (2-tailed)	,000
	N	76
Capabilities_10	Pearson Correlation	1
	Sig. (2-tailed)	
	N	76

\*\* . Correlation is significant at the 0.01 level (2-tailed).

## T-Test

### Group Statistics

		N	Mean	Std. Deviation	Std. Error Mean
Capabilities_1	HF	11	4,1818	,87386	,26348
	TS_EE	65	3,8308	,91120	,11302
Capabilities_2	HF	11	4,0909	1,04447	,31492
	TS_EE	65	4,1077	,95399	,11833
Capabilities_3	HF	11	4,0000	1,41421	,42640
	TS_EE	65	3,5692	1,06021	,13150
Capabilities_4	HF	11	4,3636	,67420	,20328
	TS_EE	65	3,8615	1,05885	,13133
Capabilities_5	HF	11	4,5455	,68755	,20730
	TS_EE	65	3,4154	1,11653	,13849
Capabilities_6	HF	11	4,4545	,68755	,20730
	TS_EE	65	3,8615	,84552	,10487
Capabilities_7	HF	11	4,3636	,92442	,27872
	TS_EE	65	3,9077	,97984	,12153
Capabilities_8	HF	11	3,7273	1,10371	,33278
	TS_EE	65	3,6615	1,13574	,14087
Capabilities_9	HF	11	4,2727	,64667	,19498
	TS_EE	65	3,4769	1,14711	,14228

### Group Statistics

	Perfil de Equipa	N	Mean	Std. Deviation	Std. Error Mean
Capabilities_10	HF	11	4,5455	,68755	,20730
	TS_EE	65	3,7846	1,09676	,13604

### Independent Samples Test

		Levene's Test for Equality of Variances		t-test for Equality of Means	
		F	Sig.	t	df
Capabilities_1	Equal variances assumed	1,432	,235	1,188	74
	Equal variances not assumed			1,224	13,945
Capabilities_2	Equal variances assumed	,195	,660	-,053	74
	Equal variances not assumed			-,050	12,983
Capabilities_3	Equal variances assumed	,950	,333	1,185	74
	Equal variances not assumed			,965	11,976
Capabilities_4	Equal variances assumed	2,920	,092	1,517	74
	Equal variances not assumed			2,075	19,558
Capabilities_5	Equal variances assumed	3,200	,078	3,243	74
	Equal variances not assumed			4,533	20,286
Capabilities_6	Equal variances assumed	,492	,485	2,202	74
	Equal variances not assumed			2,553	15,614
Capabilities_7	Equal variances assumed	,058	,810	1,438	74
	Equal variances not assumed			1,499	14,085
Capabilities_8	Equal variances assumed	,168	,683	,178	74
	Equal variances not assumed			,182	13,836

## Independent Samples Test

		t-test for Equality of Means		
		Sig. (2-tailed)	Mean Difference	Std. Error Difference
Capabilities_1	Equal variances assumed	,239	,35105	,29546
	Equal variances not assumed	,241	,35105	,28670
Capabilities_2	Equal variances assumed	,958	-,01678	,31517
	Equal variances not assumed	,961	-,01678	,33641
Capabilities_3	Equal variances assumed	,240	,43077	,36340
	Equal variances not assumed	,353	,43077	,44622
Capabilities_4	Equal variances assumed	,134	,50210	,33105
	Equal variances not assumed	,051	,50210	,24201
Capabilities_5	Equal variances assumed	,002	1,13007	,34841
	Equal variances not assumed	,000	1,13007	,24931
Capabilities_6	Equal variances assumed	,031	,59301	,26928
	Equal variances not assumed	,022	,59301	,23232
Capabilities_7	Equal variances assumed	,155	,45594	,31707
	Equal variances not assumed	,156	,45594	,30407
Capabilities_8	Equal variances assumed	,859	,06573	,36889
	Equal variances not assumed	,858	,06573	,36137

## Independent Samples Test

		t-test for Equality of Means	
		95% Confidence Interval of the Difference	
		Lower	Upper
Capabilities_1	Equal variances assumed	-,23767	,93977
	Equal variances not assumed	-,26408	,96618
Capabilities_2	Equal variances assumed	-,64478	,61121
	Equal variances not assumed	-,74366	,71010
Capabilities_3	Equal variances assumed	-,29332	1,15486
	Equal variances not assumed	-,54168	1,40321
Capabilities_4	Equal variances assumed	-,15754	1,16174
	Equal variances not assumed	-,00347	1,00766
Capabilities_5	Equal variances assumed	,43584	1,82430
	Equal variances not assumed	,61049	1,64965
Capabilities_6	Equal variances assumed	,05646	1,12956
	Equal variances not assumed	,09951	1,08650
Capabilities_7	Equal variances assumed	-,17584	1,08773
	Equal variances not assumed	-,19585	1,10774
Capabilities_8	Equal variances assumed	-,66929	,80076
	Equal variances not assumed	-,71019	,84166

### Independent Samples Test

		Levene's Test for Equality of Variances		t-test for Equality of Means	
		F	Sig.	t	df
Capabilities_9	Equal variances assumed	5,814	,018	2,233	74
	Equal variances not assumed			3,297	22,489
Capabilities_10	Equal variances assumed	2,981	,088	2,221	74
	Equal variances not assumed			3,068	19,890

### Independent Samples Test

		t-test for Equality of Means		
		Sig. (2-tailed)	Mean Difference	Std. Error Difference
Capabilities_9	Equal variances assumed	,029	,79580	,35633
	Equal variances not assumed	,003	,79580	,24137
Capabilities_10	Equal variances assumed	,029	,76084	,34259
	Equal variances not assumed	,006	,76084	,24795

### Independent Samples Test

		t-test for Equality of Means	
		95% Confidence Interval of the Difference	
		Lower	Upper
Capabilities_9	Equal variances assumed	,08579	1,50582
	Equal variances not assumed	,29586	1,29575
Capabilities_10	Equal variances assumed	,07820	1,44347
	Equal variances not assumed	,24343	1,27824

## Correlations

### Descriptive Statistics

	Mean	Std. Deviation	N
Burnout_1	3,4342	1,45452	76
Burnout_2	4,9474	1,00525	76
Burnout_3	3,0658	1,51733	76
Burnout_4	4,9211	1,08029	76
Burnout_5	4,2368	1,10596	76
Burnout_6	4,7895	1,18114	76
Burnout_7	3,2763	1,46605	76
Burnout_8	5,0658	,98435	76
Burnout_9	5,0658	1,03712	76
Burnout_10	3,8026	1,46987	76
Burnout_11	4,6974	1,07107	76
Burnout_12	4,1316	1,20380	76
Burnout_13	4,7237	1,17302	76
Burnout_14	4,7105	1,28391	76
Burnout_15	4,8421	1,45192	76
Burnout_16	4,6447	1,01593	76
Burnout_17	4,6053	1,24450	76
Burnout_18	4,8026	1,13160	76
Burnout_19	4,9079	1,22396	76
Burnout_20	2,3947	1,40550	76
Burnout_21	2,1974	1,13160	76
Burnout_22	3,1184	1,38532	76
Burnout_23	5,1579	,98051	76
Burnout_24	1,9342	1,01108	76

### Correlations

		Burnout_1	Burnout_2	Burnout_3	Burnout_4	Burnout_5
Burnout_1	Pearson Correlation	1	,299**	,343**	,141	,250*
	Sig. (2-tailed)		,009	,002	,225	,029
	N	76	76	76	76	76
Burnout_2	Pearson Correlation	,299**	1	-,050	,340**	,047
	Sig. (2-tailed)	,009		,667	,003	,685
	N	76	76	76	76	76
Burnout_3	Pearson Correlation	,343**	-,050	1	,036	,436**
	Sig. (2-tailed)	,002	,667		,759	,000
	N	76	76	76	76	76
Burnout_4	Pearson Correlation	,141	,340**	,036	1	,083
	Sig. (2-tailed)	,225	,003	,759		,477
	N	76	76	76	76	76
Burnout_5	Pearson Correlation	,250*	,047	,436**	,083	1
	Sig. (2-tailed)	,029	,685	,000	,477	
	N	76	76	76	76	76
Burnout_6	Pearson Correlation	,139	,417**	,082	,708**	,151
	Sig. (2-tailed)	,230	,000	,480	,000	,193
	N	76	76	76	76	76
Burnout_7	Pearson Correlation	,556**	,336**	,273*	,208	,206
	Sig. (2-tailed)	,000	,003	,017	,072	,074
	N	76	76	76	76	76
Burnout_8	Pearson Correlation	,231*	,394**	,060	,519**	-,002
	Sig. (2-tailed)	,044	,000	,609	,000	,985
	N	76	76	76	76	76
Burnout_9	Pearson Correlation	,149	,310**	,116	,826**	,009
	Sig. (2-tailed)	,200	,006	,319	,000	,935
	N	76	76	76	76	76
Burnout_10	Pearson Correlation	,446**	,417**	,281*	,376**	,275*
	Sig. (2-tailed)	,000	,000	,014	,001	,016
	N	76	76	76	76	76
Burnout_11	Pearson Correlation	,154	,443**	,201	,325**	,095
	Sig. (2-tailed)	,184	,000	,081	,004	,414
	N	76	76	76	76	76
Burnout_12	Pearson Correlation	,089	,116	,258*	,131	,367**
	Sig. (2-tailed)	,446	,318	,024	,259	,001
	N	76	76	76	76	76

### Correlations

		Burnout_6	Burnout_7	Burnout_8	Burnout_9
Burnout_1	Pearson Correlation	,139	,556**	,231*	,149
	Sig. (2-tailed)	,230	,000	,044	,200
	N	76	76	76	76
Burnout_2	Pearson Correlation	,417**	,336**	,394**	,310**
	Sig. (2-tailed)	,000	,003	,000	,006
	N	76	76	76	76
Burnout_3	Pearson Correlation	,082	,273*	,060	,116
	Sig. (2-tailed)	,480	,017	,609	,319
	N	76	76	76	76
Burnout_4	Pearson Correlation	,708**	,208	,519**	,826**
	Sig. (2-tailed)	,000	,072	,000	,000
	N	76	76	76	76
Burnout_5	Pearson Correlation	,151	,206	-,002	,009
	Sig. (2-tailed)	,193	,074	,985	,935
	N	76	76	76	76
Burnout_6	Pearson Correlation	1	,342**	,517**	,599**
	Sig. (2-tailed)		,002	,000	,000
	N	76	76	76	76
Burnout_7	Pearson Correlation	,342**	1	,283*	,207
	Sig. (2-tailed)	,002		,013	,073
	N	76	76	76	76
Burnout_8	Pearson Correlation	,517**	,283*	1	,544**
	Sig. (2-tailed)	,000	,013		,000
	N	76	76	76	76
Burnout_9	Pearson Correlation	,599**	,207	,544**	1
	Sig. (2-tailed)	,000	,073	,000	
	N	76	76	76	76
Burnout_10	Pearson Correlation	,521**	,700**	,451**	,411**
	Sig. (2-tailed)	,000	,000	,000	,000
	N	76	76	76	76
Burnout_11	Pearson Correlation	,434**	,173	,525**	,390**
	Sig. (2-tailed)	,000	,135	,000	,000
	N	76	76	76	76
Burnout_12	Pearson Correlation	,170	,123	,128	,089
	Sig. (2-tailed)	,143	,291	,272	,444
	N	76	76	76	76

### Correlations

		Burnout_10	Burnout_11	Burnout_12	Burnout_13
Burnout_1	Pearson Correlation	,446**	,154	,089	,110
	Sig. (2-tailed)	,000	,184	,446	,343
	N	76	76	76	76
Burnout_2	Pearson Correlation	,417**	,443**	,116	,259*
	Sig. (2-tailed)	,000	,000	,318	,024
	N	76	76	76	76
Burnout_3	Pearson Correlation	,281*	,201	,258*	,123
	Sig. (2-tailed)	,014	,081	,024	,291
	N	76	76	76	76
Burnout_4	Pearson Correlation	,376**	,325**	,131	,277*
	Sig. (2-tailed)	,001	,004	,259	,015
	N	76	76	76	76
Burnout_5	Pearson Correlation	,275*	,095	,367**	,103
	Sig. (2-tailed)	,016	,414	,001	,378
	N	76	76	76	76
Burnout_6	Pearson Correlation	,521**	,434**	,170	,160
	Sig. (2-tailed)	,000	,000	,143	,169
	N	76	76	76	76
Burnout_7	Pearson Correlation	,700**	,173	,123	,200
	Sig. (2-tailed)	,000	,135	,291	,083
	N	76	76	76	76
Burnout_8	Pearson Correlation	,451**	,525**	,128	,351**
	Sig. (2-tailed)	,000	,000	,272	,002
	N	76	76	76	76
Burnout_9	Pearson Correlation	,411**	,390**	,089	,278*
	Sig. (2-tailed)	,000	,000	,444	,015
	N	76	76	76	76
Burnout_10	Pearson Correlation	1	,283*	,045	,262*
	Sig. (2-tailed)		,013	,699	,022
	N	76	76	76	76
Burnout_11	Pearson Correlation	,283*	1	,031	,251*
	Sig. (2-tailed)	,013		,788	,029
	N	76	76	76	76
Burnout_12	Pearson Correlation	,045	,031	1	,121
	Sig. (2-tailed)	,699	,788		,300
	N	76	76	76	76

### Correlations

		Burnout_14	Burnout_15	Burnout_16	Burnout_17
Burnout_1	Pearson Correlation	,061	,077	,124	,177
	Sig. (2-tailed)	,600	,508	,287	,126
	N	76	76	76	76
Burnout_2	Pearson Correlation	,226	,031	,360**	,207
	Sig. (2-tailed)	,050	,792	,001	,073
	N	76	76	76	76
Burnout_3	Pearson Correlation	,065	,174	,136	,120
	Sig. (2-tailed)	,579	,132	,240	,302
	N	76	76	76	76
Burnout_4	Pearson Correlation	,416**	,502**	,691**	,125
	Sig. (2-tailed)	,000	,000	,000	,281
	N	76	76	76	76
Burnout_5	Pearson Correlation	,011	,206	,123	,156
	Sig. (2-tailed)	,922	,074	,288	,178
	N	76	76	76	76
Burnout_6	Pearson Correlation	,311**	,517**	,670**	,052
	Sig. (2-tailed)	,006	,000	,000	,658
	N	76	76	76	76
Burnout_7	Pearson Correlation	,149	,202	,201	,309**
	Sig. (2-tailed)	,198	,079	,082	,007
	N	76	76	76	76
Burnout_8	Pearson Correlation	,195	,138	,637**	,185
	Sig. (2-tailed)	,092	,235	,000	,110
	N	76	76	76	76
Burnout_9	Pearson Correlation	,345**	,494**	,617**	,206
	Sig. (2-tailed)	,002	,000	,000	,074
	N	76	76	76	76
Burnout_10	Pearson Correlation	,217	,279*	,390**	,263*
	Sig. (2-tailed)	,060	,015	,000	,022
	N	76	76	76	76
Burnout_11	Pearson Correlation	,129	,063	,451**	,279*
	Sig. (2-tailed)	,265	,588	,000	,015
	N	76	76	76	76
Burnout_12	Pearson Correlation	,034	,126	,159	-,054
	Sig. (2-tailed)	,773	,276	,171	,644
	N	76	76	76	76

### Correlations

		Burnout_18	Burnout_19	Burnout_20	Burnout_21
Burnout_1	Pearson Correlation	-,004	,225	-,215	-,231*
	Sig. (2-tailed)	,973	,051	,062	,045
	N	76	76	76	76
Burnout_2	Pearson Correlation	,131	,419**	-,391**	-,354**
	Sig. (2-tailed)	,258	,000	,000	,002
	N	76	76	76	76
Burnout_3	Pearson Correlation	-,210	,212	-,137	-,163
	Sig. (2-tailed)	,069	,067	,237	,160
	N	76	76	76	76
Burnout_4	Pearson Correlation	,423**	,368**	-,313**	-,489**
	Sig. (2-tailed)	,000	,001	,006	,000
	N	76	76	76	76
Burnout_5	Pearson Correlation	-,015	,125	-,232*	-,080
	Sig. (2-tailed)	,895	,283	,043	,490
	N	76	76	76	76
Burnout_6	Pearson Correlation	,188	,531**	-,367**	-,697**
	Sig. (2-tailed)	,104	,000	,001	,000
	N	76	76	76	76
Burnout_7	Pearson Correlation	,001	,319**	-,151	-,363**
	Sig. (2-tailed)	,992	,005	,194	,001
	N	76	76	76	76
Burnout_8	Pearson Correlation	,251*	,437**	-,270*	-,574**
	Sig. (2-tailed)	,029	,000	,019	,000
	N	76	76	76	76
Burnout_9	Pearson Correlation	,273*	,372**	-,366**	-,488**
	Sig. (2-tailed)	,017	,001	,001	,000
	N	76	76	76	76
Burnout_10	Pearson Correlation	,080	,442**	-,343**	-,497**
	Sig. (2-tailed)	,490	,000	,002	,000
	N	76	76	76	76
Burnout_11	Pearson Correlation	,104	,345**	-,309**	-,379**
	Sig. (2-tailed)	,371	,002	,007	,001
	N	76	76	76	76
Burnout_12	Pearson Correlation	,000	,117	-,039	-,137
	Sig. (2-tailed)	,998	,314	,738	,239
	N	76	76	76	76

### Correlations

		Burnout_22	Burnout_23	Burnout_24
Burnout_1	Pearson Correlation	-,277 <sup>*</sup>	-,105	-,089
	Sig. (2-tailed)	,015	,368	,444
	N	76	76	76
Burnout_2	Pearson Correlation	-,024	,333 <sup>**</sup>	-,266 <sup>*</sup>
	Sig. (2-tailed)	,836	,003	,020
	N	76	76	76
Burnout_3	Pearson Correlation	-,226 <sup>*</sup>	-,043	-,058
	Sig. (2-tailed)	,050	,713	,619
	N	76	76	76
Burnout_4	Pearson Correlation	-,270 <sup>*</sup>	,465 <sup>**</sup>	-,725 <sup>**</sup>
	Sig. (2-tailed)	,018	,000	,000
	N	76	76	76
Burnout_5	Pearson Correlation	-,106	,125	-,069
	Sig. (2-tailed)	,364	,282	,552
	N	76	76	76
Burnout_6	Pearson Correlation	-,180	,340 <sup>**</sup>	-,715 <sup>**</sup>
	Sig. (2-tailed)	,119	,003	,000
	N	76	76	76
Burnout_7	Pearson Correlation	-,253 <sup>*</sup>	,173	-,185
	Sig. (2-tailed)	,028	,134	,109
	N	76	76	76
Burnout_8	Pearson Correlation	-,328 <sup>**</sup>	,307 <sup>**</sup>	-,572 <sup>**</sup>
	Sig. (2-tailed)	,004	,007	,000
	N	76	76	76
Burnout_9	Pearson Correlation	-,377 <sup>**</sup>	,409 <sup>**</sup>	-,759 <sup>**</sup>
	Sig. (2-tailed)	,001	,000	,000
	N	76	76	76
Burnout_10	Pearson Correlation	-,198	,244 <sup>*</sup>	-,395 <sup>**</sup>
	Sig. (2-tailed)	,087	,034	,000
	N	76	76	76
Burnout_11	Pearson Correlation	-,128	,237 <sup>*</sup>	-,363 <sup>**</sup>
	Sig. (2-tailed)	,269	,040	,001
	N	76	76	76
Burnout_12	Pearson Correlation	-,025	,140	-,201
	Sig. (2-tailed)	,827	,227	,082
	N	76	76	76

### Correlations

		Burnout_1	Burnout_2	Burnout_3	Burnout_4	Burnout_5
Burnout_13	Pearson Correlation	,110	,259*	,123	,277*	,103
	Sig. (2-tailed)	,343	,024	,291	,015	,378
	N	76	76	76	76	76
Burnout_14	Pearson Correlation	,061	,226	,065	,416**	,011
	Sig. (2-tailed)	,600	,050	,579	,000	,922
	N	76	76	76	76	76
Burnout_15	Pearson Correlation	,077	,031	,174	,502**	,206
	Sig. (2-tailed)	,508	,792	,132	,000	,074
	N	76	76	76	76	76
Burnout_16	Pearson Correlation	,124	,360**	,136	,691**	,123
	Sig. (2-tailed)	,287	,001	,240	,000	,288
	N	76	76	76	76	76
Burnout_17	Pearson Correlation	,177	,207	,120	,125	,156
	Sig. (2-tailed)	,126	,073	,302	,281	,178
	N	76	76	76	76	76
Burnout_18	Pearson Correlation	-,004	,131	-,210	,423**	-,015
	Sig. (2-tailed)	,973	,258	,069	,000	,895
	N	76	76	76	76	76
Burnout_19	Pearson Correlation	,225	,419**	,212	,368**	,125
	Sig. (2-tailed)	,051	,000	,067	,001	,283
	N	76	76	76	76	76
Burnout_20	Pearson Correlation	-,215	-,391**	-,137	-,313**	-,232*
	Sig. (2-tailed)	,062	,000	,237	,006	,043
	N	76	76	76	76	76
Burnout_21	Pearson Correlation	-,231*	-,354**	-,163	-,489**	-,080
	Sig. (2-tailed)	,045	,002	,160	,000	,490
	N	76	76	76	76	76
Burnout_22	Pearson Correlation	-,277*	-,024	-,226*	-,270*	-,106
	Sig. (2-tailed)	,015	,836	,050	,018	,364
	N	76	76	76	76	76
Burnout_23	Pearson Correlation	-,105	,333**	-,043	,465**	,125
	Sig. (2-tailed)	,368	,003	,713	,000	,282
	N	76	76	76	76	76
Burnout_24	Pearson Correlation	-,089	-,266*	-,058	-,725**	-,069
	Sig. (2-tailed)	,444	,020	,619	,000	,552
	N	76	76	76	76	76

### Correlations

		Burnout_6	Burnout_7	Burnout_8	Burnout_9
Burnout_13	Pearson Correlation	,160	,200	,351**	,278*
	Sig. (2-tailed)	,169	,083	,002	,015
	N	76	76	76	76
Burnout_14	Pearson Correlation	,311**	,149	,195	,345**
	Sig. (2-tailed)	,006	,198	,092	,002
	N	76	76	76	76
Burnout_15	Pearson Correlation	,517**	,202	,138	,494**
	Sig. (2-tailed)	,000	,079	,235	,000
	N	76	76	76	76
Burnout_16	Pearson Correlation	,670**	,201	,637**	,617**
	Sig. (2-tailed)	,000	,082	,000	,000
	N	76	76	76	76
Burnout_17	Pearson Correlation	,052	,309**	,185	,206
	Sig. (2-tailed)	,658	,007	,110	,074
	N	76	76	76	76
Burnout_18	Pearson Correlation	,188	,001	,251*	,273*
	Sig. (2-tailed)	,104	,992	,029	,017
	N	76	76	76	76
Burnout_19	Pearson Correlation	,531**	,319**	,437**	,372**
	Sig. (2-tailed)	,000	,005	,000	,001
	N	76	76	76	76
Burnout_20	Pearson Correlation	-,367**	-,151	-,270*	-,366**
	Sig. (2-tailed)	,001	,194	,019	,001
	N	76	76	76	76
Burnout_21	Pearson Correlation	-,697**	-,363**	-,574**	-,488**
	Sig. (2-tailed)	,000	,001	,000	,000
	N	76	76	76	76
Burnout_22	Pearson Correlation	-,180	-,253*	-,328**	-,377**
	Sig. (2-tailed)	,119	,028	,004	,001
	N	76	76	76	76
Burnout_23	Pearson Correlation	,340**	,173	,307**	,409**
	Sig. (2-tailed)	,003	,134	,007	,000
	N	76	76	76	76
Burnout_24	Pearson Correlation	-,715**	-,185	-,572**	-,759**
	Sig. (2-tailed)	,000	,109	,000	,000
	N	76	76	76	76

### Correlations

		Burnout_10	Burnout_11	Burnout_12	Burnout_13
Burnout_13	Pearson Correlation	,262 <sup>*</sup>	,251 <sup>*</sup>	,121	1
	Sig. (2-tailed)	,022	,029	,300	
	N	76	76	76	76
Burnout_14	Pearson Correlation	,217	,129	,034	,194
	Sig. (2-tailed)	,060	,265	,773	,093
	N	76	76	76	76
Burnout_15	Pearson Correlation	,279 <sup>*</sup>	,063	,126	,162
	Sig. (2-tailed)	,015	,588	,276	,162
	N	76	76	76	76
Burnout_16	Pearson Correlation	,390 <sup>**</sup>	,451 <sup>**</sup>	,159	,331 <sup>**</sup>
	Sig. (2-tailed)	,000	,000	,171	,004
	N	76	76	76	76
Burnout_17	Pearson Correlation	,263 <sup>*</sup>	,279 <sup>*</sup>	-,054	,299 <sup>**</sup>
	Sig. (2-tailed)	,022	,015	,644	,009
	N	76	76	76	76
Burnout_18	Pearson Correlation	,080	,104	,000	-,001
	Sig. (2-tailed)	,490	,371	,998	,990
	N	76	76	76	76
Burnout_19	Pearson Correlation	,442 <sup>**</sup>	,345 <sup>**</sup>	,117	,121
	Sig. (2-tailed)	,000	,002	,314	,296
	N	76	76	76	76
Burnout_20	Pearson Correlation	-,343 <sup>**</sup>	-,309 <sup>**</sup>	-,039	-,184
	Sig. (2-tailed)	,002	,007	,738	,112
	N	76	76	76	76
Burnout_21	Pearson Correlation	-,497 <sup>**</sup>	-,379 <sup>**</sup>	-,137	-,209
	Sig. (2-tailed)	,000	,001	,239	,069
	N	76	76	76	76
Burnout_22	Pearson Correlation	-,198	-,128	-,025	-,127
	Sig. (2-tailed)	,087	,269	,827	,273
	N	76	76	76	76
Burnout_23	Pearson Correlation	,244 <sup>*</sup>	,237 <sup>*</sup>	,140	,282 <sup>*</sup>
	Sig. (2-tailed)	,034	,040	,227	,014
	N	76	76	76	76
Burnout_24	Pearson Correlation	-,395 <sup>**</sup>	-,363 <sup>**</sup>	-,201	-,195
	Sig. (2-tailed)	,000	,001	,082	,091
	N	76	76	76	76

### Correlations

		Burnout_14	Burnout_15	Burnout_16	Burnout_17
Burnout_13	Pearson Correlation	,194	,162	,331**	,299**
	Sig. (2-tailed)	,093	,162	,004	,009
	N	76	76	76	76
Burnout_14	Pearson Correlation	1	,311**	,349**	,111
	Sig. (2-tailed)		,006	,002	,339
	N	76	76	76	76
Burnout_15	Pearson Correlation	,311**	1	,323**	,371**
	Sig. (2-tailed)	,006		,004	,001
	N	76	76	76	76
Burnout_16	Pearson Correlation	,349**	,323**	1	,109
	Sig. (2-tailed)	,002	,004		,348
	N	76	76	76	76
Burnout_17	Pearson Correlation	,111	,371**	,109	1
	Sig. (2-tailed)	,339	,001	,348	
	N	76	76	76	76
Burnout_18	Pearson Correlation	,428**	,021	,344**	-,056
	Sig. (2-tailed)	,000	,855	,002	,631
	N	76	76	76	76
Burnout_19	Pearson Correlation	,246*	,382**	,434**	,387**
	Sig. (2-tailed)	,032	,001	,000	,001
	N	76	76	76	76
Burnout_20	Pearson Correlation	-,113	-,355**	-,209	-,298**
	Sig. (2-tailed)	,330	,002	,071	,009
	N	76	76	76	76
Burnout_21	Pearson Correlation	-,327**	-,525**	-,541**	-,332**
	Sig. (2-tailed)	,004	,000	,000	,003
	N	76	76	76	76
Burnout_22	Pearson Correlation	-,070	-,249*	-,244*	-,096
	Sig. (2-tailed)	,545	,030	,033	,408
	N	76	76	76	76
Burnout_23	Pearson Correlation	,344**	,083	,472**	,128
	Sig. (2-tailed)	,002	,474	,000	,270
	N	76	76	76	76
Burnout_24	Pearson Correlation	-,457**	-,470**	-,698**	-,159
	Sig. (2-tailed)	,000	,000	,000	,171
	N	76	76	76	76

### Correlations

		Burnout_18	Burnout_19	Burnout_20	Burnout_21
Burnout_13	Pearson Correlation	-,001	,121	-,184	-,209
	Sig. (2-tailed)	,990	,296	,112	,069
	N	76	76	76	76
Burnout_14	Pearson Correlation	,428**	,246*	-,113	-,327**
	Sig. (2-tailed)	,000	,032	,330	,004
	N	76	76	76	76
Burnout_15	Pearson Correlation	,021	,382**	-,355**	-,525**
	Sig. (2-tailed)	,855	,001	,002	,000
	N	76	76	76	76
Burnout_16	Pearson Correlation	,344**	,434**	-,209	-,541**
	Sig. (2-tailed)	,002	,000	,071	,000
	N	76	76	76	76
Burnout_17	Pearson Correlation	-,056	,387**	-,298**	-,332**
	Sig. (2-tailed)	,631	,001	,009	,003
	N	76	76	76	76
Burnout_18	Pearson Correlation	1	,054	-,084	-,136
	Sig. (2-tailed)		,643	,468	,242
	N	76	76	76	76
Burnout_19	Pearson Correlation	,054	1	-,366**	-,670**
	Sig. (2-tailed)	,643		,001	,000
	N	76	76	76	76
Burnout_20	Pearson Correlation	-,084	-,366**	1	,495**
	Sig. (2-tailed)	,468	,001		,000
	N	76	76	76	76
Burnout_21	Pearson Correlation	-,136	-,670**	,495**	1
	Sig. (2-tailed)	,242	,000	,000	
	N	76	76	76	76
Burnout_22	Pearson Correlation	-,095	-,159	-,038	,215
	Sig. (2-tailed)	,412	,171	,744	,063
	N	76	76	76	76
Burnout_23	Pearson Correlation	,509**	,168	-,143	-,257*
	Sig. (2-tailed)	,000	,147	,219	,025
	N	76	76	76	76
Burnout_24	Pearson Correlation	-,384**	-,490**	,319**	,606**
	Sig. (2-tailed)	,001	,000	,005	,000
	N	76	76	76	76

### Correlations

		Burnout_22	Burnout_23	Burnout_24
Burnout_13	Pearson Correlation	-,127	,282*	-,195
	Sig. (2-tailed)	,273	,014	,091
	N	76	76	76
Burnout_14	Pearson Correlation	-,070	,344**	-,457**
	Sig. (2-tailed)	,545	,002	,000
	N	76	76	76
Burnout_15	Pearson Correlation	-,249*	,083	-,470**
	Sig. (2-tailed)	,030	,474	,000
	N	76	76	76
Burnout_16	Pearson Correlation	-,244*	,472**	-,698**
	Sig. (2-tailed)	,033	,000	,000
	N	76	76	76
Burnout_17	Pearson Correlation	-,096	,128	-,159
	Sig. (2-tailed)	,408	,270	,171
	N	76	76	76
Burnout_18	Pearson Correlation	-,095	,509**	-,384**
	Sig. (2-tailed)	,412	,000	,001
	N	76	76	76
Burnout_19	Pearson Correlation	-,159	,168	-,490**
	Sig. (2-tailed)	,171	,147	,000
	N	76	76	76
Burnout_20	Pearson Correlation	-,038	-,143	,319**
	Sig. (2-tailed)	,744	,219	,005
	N	76	76	76
Burnout_21	Pearson Correlation	,215	-,257*	,606**
	Sig. (2-tailed)	,063	,025	,000
	N	76	76	76
Burnout_22	Pearson Correlation	1	-,043	,291*
	Sig. (2-tailed)		,710	,011
	N	76	76	76
Burnout_23	Pearson Correlation	-,043	1	-,474**
	Sig. (2-tailed)	,710		,000
	N	76	76	76
Burnout_24	Pearson Correlation	,291*	-,474**	1
	Sig. (2-tailed)	,011	,000	
	N	76	76	76

\*\* . Correlation is significant at the 0.01 level (2-tailed).

\*. Correlation is significant at the 0.05 level (2-tailed).

## T-Test

### Group Statistics

	Perfil de Equipa	N	Mean	Std. Deviation	Std. Error Mean
Burnout_1	HF	11	3,5455	1,36848	,41261
	TS_EE	65	3,4154	1,47788	,18331
Burnout_2	HF	11	4,8182	1,32802	,40041
	TS_EE	65	4,9692	,95147	,11801
Burnout_3	HF	11	3,1818	1,60114	,48276
	TS_EE	65	3,0462	1,51483	,18789
Burnout_4	HF	11	5,2727	,46710	,14084
	TS_EE	65	4,8615	1,14396	,14189
Burnout_5	HF	11	4,2727	,90453	,27273
	TS_EE	65	4,2308	1,14249	,14171
Burnout_6	HF	11	5,0000	,89443	,26968
	TS_EE	65	4,7538	1,22514	,15196
Burnout_7	HF	11	2,9091	1,44600	,43598
	TS_EE	65	3,3385	1,47136	,18250
Burnout_8	HF	11	5,1818	,60302	,18182
	TS_EE	65	5,0462	1,03729	,12866
Burnout_9	HF	11	5,2727	,64667	,19498
	TS_EE	65	5,0308	1,08928	,13511
Burnout_10	HF	11	3,7273	1,48936	,44906
	TS_EE	65	3,8154	1,47788	,18331
Burnout_11	HF	11	4,6364	1,02691	,30963
	TS_EE	65	4,7077	1,08575	,13467
Burnout_12	HF	11	4,3636	1,02691	,30963
	TS_EE	65	4,0923	1,23394	,15305
Burnout_13	HF	11	4,3636	1,56670	,47238
	TS_EE	65	4,7846	1,09676	,13604
Burnout_14	HF	11	4,9091	,94388	,28459
	TS_EE	65	4,6769	1,33589	,16570
Burnout_15	HF	11	5,0000	1,09545	,33029
	TS_EE	65	4,8154	1,50927	,18720
Burnout_16	HF	11	4,8182	,75076	,22636
	TS_EE	65	4,6154	1,05612	,13100
Burnout_17	HF	11	4,3636	1,20605	,36364
	TS_EE	65	4,6462	1,25537	,15571

### Group Statistics

	Perfil de Equipa	N	Mean	Std. Deviation	Std. Error Mean
Burnout_18	HF	11	5,0000	1,09545	,33029
	TS_EE	65	4,7692	1,14249	,14171
Burnout_19	HF	11	4,9091	1,22103	,36815
	TS_EE	65	4,9077	1,23394	,15305
Burnout_20	HF	11	2,3636	1,20605	,36364
	TS_EE	65	2,4000	1,44482	,17921
Burnout_21	HF	11	2,1818	,60302	,18182
	TS_EE	65	2,2000	1,20156	,14904
Burnout_22	HF	11	3,1818	1,53741	,46355
	TS_EE	65	3,1077	1,37071	,17002
Burnout_23	HF	11	5,0909	1,13618	,34257
	TS_EE	65	5,1692	,96127	,11923
Burnout_24	HF	11	1,8182	,87386	,26348
	TS_EE	65	1,9538	1,03729	,12866

### Independent Samples Test

		Levene's Test for Equality of Variances		t-test for Equality of Means	
		F	Sig.	t	df
Burnout_1	Equal variances assumed	,143	,706	,273	74
	Equal variances not assumed			,288	14,250
Burnout_2	Equal variances assumed	2,081	,153	-,458	74
	Equal variances not assumed			-,362	11,799
Burnout_3	Equal variances assumed	,385	,537	,273	74
	Equal variances not assumed			,262	13,212
Burnout_4	Equal variances assumed	13,353	,000	1,170	74
	Equal variances not assumed			2,057	34,974
Burnout_5	Equal variances assumed	,763	,385	,116	74
	Equal variances not assumed			,137	15,947

## Independent Samples Test

		t-test for Equality of Means		
		Sig. (2-tailed)	Mean Difference	Std. Error Difference
Burnout_1	Equal variances assumed	,786	,13007	,47717
	Equal variances not assumed	,777	,13007	,45150
Burnout_2	Equal variances assumed	,648	-,15105	,32948
	Equal variances not assumed	,724	-,15105	,41744
Burnout_3	Equal variances assumed	,786	,13566	,49777
	Equal variances not assumed	,797	,13566	,51804
Burnout_4	Equal variances assumed	,246	,41119	,35134
	Equal variances not assumed	,047	,41119	,19992
Burnout_5	Equal variances assumed	,908	,04196	,36297
	Equal variances not assumed	,893	,04196	,30735

## Independent Samples Test

		t-test for Equality of Means	
		95% Confidence Interval of the Difference	
		Lower	Upper
Burnout_1	Equal variances assumed	-,82070	1,08084
	Equal variances not assumed	-,83670	1,09684
Burnout_2	Equal variances assumed	-,80755	,50545
	Equal variances not assumed	-1,06230	,76020
Burnout_3	Equal variances assumed	-,85617	1,12750
	Equal variances not assumed	-,98166	1,25299
Burnout_4	Equal variances assumed	-,28887	1,11124
	Equal variances not assumed	,00532	,81706
Burnout_5	Equal variances assumed	-,68128	,76519
	Equal variances not assumed	-,60976	,69368

### Independent Samples Test

		Levene's Test for Equality of Variances		t-test for Equality of Means	
		F	Sig.	t	df
Burnout_6	Equal variances assumed	8,578	,005	,637	74
	Equal variances not assumed			,795	17,089
Burnout_7	Equal variances assumed	,075	,785	-,897	74
	Equal variances not assumed			-,908	13,745
Burnout_8	Equal variances assumed	4,914	,030	,420	74
	Equal variances not assumed			,609	21,673
Burnout_9	Equal variances assumed	2,056	,156	,713	74
	Equal variances not assumed			1,020	21,147
Burnout_10	Equal variances assumed	,022	,884	-,183	74
	Equal variances not assumed			-,182	13,552
Burnout_11	Equal variances assumed	,022	,884	-,203	74
	Equal variances not assumed			-,211	14,063
Burnout_12	Equal variances assumed	,678	,413	,689	74
	Equal variances not assumed			,786	15,341
Burnout_13	Equal variances assumed	2,101	,151	-1,102	74
	Equal variances not assumed			-,856	11,715
Burnout_14	Equal variances assumed	2,549	,115	,552	74
	Equal variances not assumed			,705	17,613
Burnout_15	Equal variances assumed	2,960	,090	,388	74
	Equal variances not assumed			,486	17,180

## Independent Samples Test

		t-test for Equality of Means		
		Sig. (2-tailed)	Mean Difference	Std. Error Difference
Burnout_6	Equal variances assumed	,526	,24615	,38662
	Equal variances not assumed	,437	,24615	,30955
Burnout_7	Equal variances assumed	,373	-,42937	,47859
	Equal variances not assumed	,379	-,42937	,47264
Burnout_8	Equal variances assumed	,675	,13566	,32270
	Equal variances not assumed	,549	,13566	,22274
Burnout_9	Equal variances assumed	,478	,24196	,33924
	Equal variances not assumed	,319	,24196	,23722
Burnout_10	Equal variances assumed	,856	-,08811	,48234
	Equal variances not assumed	,859	-,08811	,48503
Burnout_11	Equal variances assumed	,840	-,07133	,35145
	Equal variances not assumed	,836	-,07133	,33764
Burnout_12	Equal variances assumed	,493	,27133	,39385
	Equal variances not assumed	,444	,27133	,34539
Burnout_13	Equal variances assumed	,274	-,42098	,38189
	Equal variances not assumed	,409	-,42098	,49158
Burnout_14	Equal variances assumed	,583	,23217	,42054
	Equal variances not assumed	,490	,23217	,32931
Burnout_15	Equal variances assumed	,699	,18462	,47607
	Equal variances not assumed	,633	,18462	,37965

## Independent Samples Test

		t-test for Equality of Means	
		95% Confidence Interval of the Difference	
		Lower	Upper
Burnout_6	Equal variances assumed	-,52420	1,01651
	Equal variances not assumed	-,40667	,89898
Burnout_7	Equal variances assumed	-1,38299	,52425
	Equal variances not assumed	-1,44485	,58611
Burnout_8	Equal variances assumed	-,50733	,77866
	Equal variances not assumed	-,32667	,59799
Burnout_9	Equal variances assumed	-,43400	,91791
	Equal variances not assumed	-,25115	,73506
Burnout_10	Equal variances assumed	-1,04919	,87297
	Equal variances not assumed	-1,13164	,95541
Burnout_11	Equal variances assumed	-,77161	,62895
	Equal variances not assumed	-,79520	,65254
Burnout_12	Equal variances assumed	-,51344	1,05610
	Equal variances not assumed	-,46343	1,00608
Burnout_13	Equal variances assumed	-1,18191	,33995
	Equal variances not assumed	-1,49493	,65297
Burnout_14	Equal variances assumed	-,60578	1,07012
	Equal variances not assumed	-,46079	,92512
Burnout_15	Equal variances assumed	-,76397	1,13320
	Equal variances not assumed	-,61574	,98497

### Independent Samples Test

		Levene's Test for Equality of Variances		t-test for Equality of Means	
		F	Sig.	t	df
Burnout_16	Equal variances assumed	5,606	,021	,610	74
	Equal variances not assumed			,775	17,512
Burnout_17	Equal variances assumed	,001	,971	-,694	74
	Equal variances not assumed			-,714	13,930
Burnout_18	Equal variances assumed	,024	,877	,623	74
	Equal variances not assumed			,642	13,947
Burnout_19	Equal variances assumed	,154	,696	,003	74
	Equal variances not assumed			,004	13,691
Burnout_20	Equal variances assumed	,780	,380	-,079	74
	Equal variances not assumed			-,090	15,306
Burnout_21	Equal variances assumed	5,672	,020	-,049	74
	Equal variances not assumed			-,077	26,111
Burnout_22	Equal variances assumed	,372	,544	,163	74
	Equal variances not assumed			,150	12,835
Burnout_23	Equal variances assumed	,094	,760	-,243	74
	Equal variances not assumed			-,216	12,541
Burnout_24	Equal variances assumed	1,789	,185	-,409	74
	Equal variances not assumed			-,463	15,202

## Independent Samples Test

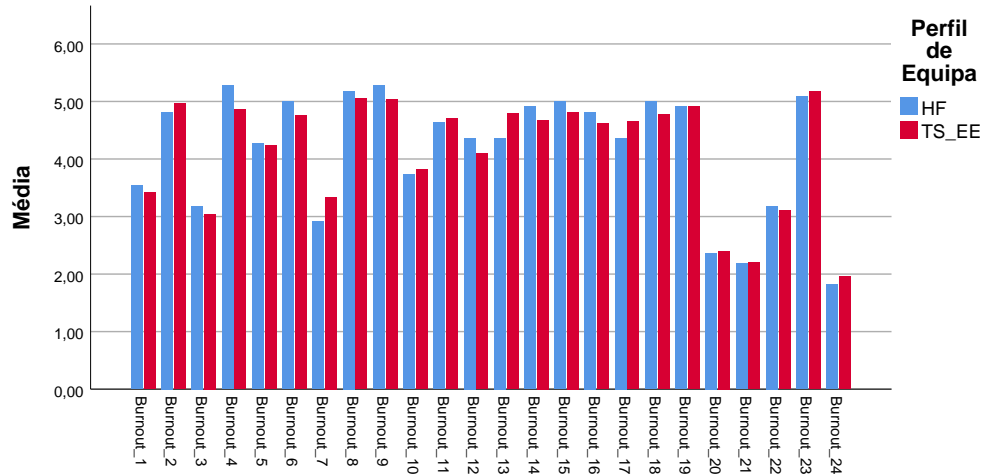
		t-test for Equality of Means		
		Sig. (2-tailed)	Mean Difference	Std. Error Difference
Burnout_16	Equal variances assumed	,544	,20280	,33262
	Equal variances not assumed	,448	,20280	,26153
Burnout_17	Equal variances assumed	,490	-,28252	,40715
	Equal variances not assumed	,487	-,28252	,39557
Burnout_18	Equal variances assumed	,535	,23077	,37045
	Equal variances not assumed	,531	,23077	,35941
Burnout_19	Equal variances assumed	,997	,00140	,40173
	Equal variances not assumed	,997	,00140	,39870
Burnout_20	Equal variances assumed	,937	-,03636	,46130
	Equal variances not assumed	,930	-,03636	,40540
Burnout_21	Equal variances assumed	,961	-,01818	,37141
	Equal variances not assumed	,939	-,01818	,23509
Burnout_22	Equal variances assumed	,871	,07413	,45461
	Equal variances not assumed	,883	,07413	,49374
Burnout_23	Equal variances assumed	,808	-,07832	,32170
	Equal variances not assumed	,833	-,07832	,36273
Burnout_24	Equal variances assumed	,684	-,13566	,33148
	Equal variances not assumed	,650	-,13566	,29321

## Independent Samples Test

		t-test for Equality of Means	
		95% Confidence Interval of the Difference	
		Lower	Upper
Burnout_16	Equal variances assumed	-,45995	,86555
	Equal variances not assumed	-,34776	,75336
Burnout_17	Equal variances assumed	-1,09378	,52875
	Equal variances not assumed	-1,13133	,56630
Burnout_18	Equal variances assumed	-,50736	,96890
	Equal variances not assumed	-,54036	1,00189
Burnout_19	Equal variances assumed	-,79907	,80186
	Equal variances not assumed	-,85554	,85834
Burnout_20	Equal variances assumed	-,95552	,88279
	Equal variances not assumed	-,89894	,82622
Burnout_21	Equal variances assumed	-,75824	,72187
	Equal variances not assumed	-,50133	,46496
Burnout_22	Equal variances assumed	-,83171	,97996
	Equal variances not assumed	-,99393	1,14219
Burnout_23	Equal variances assumed	-,71932	,56267
	Equal variances not assumed	-,86487	,70823
Burnout_24	Equal variances assumed	-,79616	,52483
	Equal variances not assumed	-,75991	,48858

## GGraph

Barra em Cluster: Média de Burnout por Perfil de Equipa



## Correlations

### Descriptive Statistics

	Mean	Std. Deviation	N
BES_a1_energia	4,28	1,078	76
BES_a2_vigorosdade	4,12	1,233	76
BES_a3_entusiasmo	4,51	1,052	76
BES_a4_inspiração	4,53	1,089	76
BES_a5_vontade	4,18	1,251	76
BES_a6_felicidade	4,32	1,048	76
BES_a7_orgulho	4,91	1,022	76
BES_a8_imersão	4,41	1,133	76
BES_a9_dedicação	4,29	1,105	76

### Correlations

		BES_a1_energi a	BES_a2_vigoro sdade	BES_a3_entusi asmo
BES_a1_energia	Pearson Correlation	1	,858**	,849**
	Sig. (2-tailed)		,000	,000
	N	76	76	76
BES_a2_vigoro sdade	Pearson Correlation	,858**	1	,683**
	Sig. (2-tailed)	,000		,000
	N	76	76	76
BES_a3_entusiasmo	Pearson Correlation	,849**	,683**	1
	Sig. (2-tailed)	,000	,000	
	N	76	76	76
BES_a4_inspiração	Pearson Correlation	,806**	,728**	,809**
	Sig. (2-tailed)	,000	,000	,000
	N	76	76	76
BES_a5_vontade	Pearson Correlation	,792**	,703**	,748**
	Sig. (2-tailed)	,000	,000	,000
	N	76	76	76
BES_a6_felicidade	Pearson Correlation	,665**	,559**	,673**
	Sig. (2-tailed)	,000	,000	,000
	N	76	76	76
BES_a7_orgulho	Pearson Correlation	,616**	,580**	,603**
	Sig. (2-tailed)	,000	,000	,000
	N	76	76	76
BES_a8_imersão	Pearson Correlation	,441**	,433**	,314**
	Sig. (2-tailed)	,000	,000	,006
	N	76	76	76
BES_a9_dedicacão	Pearson Correlation	,782**	,728**	,799**
	Sig. (2-tailed)	,000	,000	,000
	N	76	76	76

### Correlations

		BES_a4_inspiração	BES_a5_vontade	BES_a6_felicidade
BES_a1_energia	Pearson Correlation	,806**	,792**	,665**
	Sig. (2-tailed)	,000	,000	,000
	N	76	76	76
BES_a2_vigorosidade	Pearson Correlation	,728**	,703**	,559**
	Sig. (2-tailed)	,000	,000	,000
	N	76	76	76
BES_a3_entusiasmo	Pearson Correlation	,809**	,748**	,673**
	Sig. (2-tailed)	,000	,000	,000
	N	76	76	76
BES_a4_inspiração	Pearson Correlation	1	,740**	,612**
	Sig. (2-tailed)		,000	,000
	N	76	76	76
BES_a5_vontade	Pearson Correlation	,740**	1	,636**
	Sig. (2-tailed)	,000		,000
	N	76	76	76
BES_a6_felicidade	Pearson Correlation	,612**	,636**	1
	Sig. (2-tailed)	,000	,000	
	N	76	76	76
BES_a7_orgulho	Pearson Correlation	,667**	,649**	,650**
	Sig. (2-tailed)	,000	,000	,000
	N	76	76	76
BES_a8_imersão	Pearson Correlation	,418**	,313**	,283*
	Sig. (2-tailed)	,000	,006	,013
	N	76	76	76
BES_a9_dedicacão	Pearson Correlation	,747**	,694**	,656**
	Sig. (2-tailed)	,000	,000	,000
	N	76	76	76

## Correlations

		BES_a7_orgulho	BES_a8_imersão	BES_a9_dedicacão
BES_a1_energia	Pearson Correlation	,616**	,441**	,782**
	Sig. (2-tailed)	,000	,000	,000
	N	76	76	76
BES_a2_vigoroidade	Pearson Correlation	,580**	,433**	,728**
	Sig. (2-tailed)	,000	,000	,000
	N	76	76	76
BES_a3_entusiasmo	Pearson Correlation	,603**	,314**	,799**
	Sig. (2-tailed)	,000	,006	,000
	N	76	76	76
BES_a4_inspiração	Pearson Correlation	,667**	,418**	,747**
	Sig. (2-tailed)	,000	,000	,000
	N	76	76	76
BES_a5_vontade	Pearson Correlation	,649**	,313**	,694**
	Sig. (2-tailed)	,000	,006	,000
	N	76	76	76
BES_a6_felicidade	Pearson Correlation	,650**	,283*	,656**
	Sig. (2-tailed)	,000	,013	,000
	N	76	76	76
BES_a7_orgulho	Pearson Correlation	1	,321**	,579**
	Sig. (2-tailed)		,005	,000
	N	76	76	76
BES_a8_imersão	Pearson Correlation	,321**	1	,447**
	Sig. (2-tailed)	,005		,000
	N	76	76	76
BES_a9_dedicacão	Pearson Correlation	,579**	,447**	1
	Sig. (2-tailed)	,000	,000	
	N	76	76	76

\*\* . Correlation is significant at the 0.01 level (2-tailed).

\* . Correlation is significant at the 0.05 level (2-tailed).

## T-Test

### Group Statistics

	Perfil de Equipa	N	Mean	Std. Deviation	Std. Error Mean
BES_a1_energia	HF	11	4,45	,688	,207
	TS_EE	65	4,25	1,132	,140
BES_a2_vigorosdade	HF	11	4,18	,751	,226
	TS_EE	65	4,11	1,301	,161
BES_a3_entusiasmo	HF	11	4,73	,786	,237
	TS_EE	65	4,48	1,091	,135
BES_a4_inspiração	HF	11	4,55	1,128	,340
	TS_EE	65	4,52	1,091	,135
BES_a5_vontade	HF	11	4,55	,820	,247
	TS_EE	65	4,12	1,305	,162
BES_a6_felicidade	HF	11	4,45	,522	,157
	TS_EE	65	4,29	1,114	,138
BES_a7_orgulho	HF	11	5,00	,894	,270
	TS_EE	65	4,89	1,048	,130
BES_a8_imersão	HF	11	4,45	1,128	,340
	TS_EE	65	4,40	1,143	,142
BES_a9_dedicação	HF	11	4,36	,809	,244
	TS_EE	65	4,28	1,153	,143

### Independent Samples Test

		Levene's Test for Equality of Variances		t-test for Equality of .
		F	Sig.	t
BES_a1_energia	Equal variances assumed	4,216	,044	,590
	Equal variances not assumed			,832
BES_a2_vigorsdade	Equal variances assumed	2,487	,119	,183
	Equal variances not assumed			,267
BES_a3_entusiasmo	Equal variances assumed	2,847	,096	,728
	Equal variances not assumed			,917
BES_a4_inspiração	Equal variances assumed	,000	,984	,063
	Equal variances not assumed			,061
BES_a5_vontade	Equal variances assumed	2,188	,143	1,036
	Equal variances not assumed			1,429
BES_a6_felicidade	Equal variances assumed	5,653	,020	,472
	Equal variances not assumed			,774
BES_a7_orgulho	Equal variances assumed	,662	,418	,321
	Equal variances not assumed			,360
BES_a8_imersão	Equal variances assumed	,492	,485	,147
	Equal variances not assumed			,148
BES_a9_dedicacão	Equal variances assumed	2,235	,139	,239
	Equal variances not assumed			,307

## Independent Samples Test

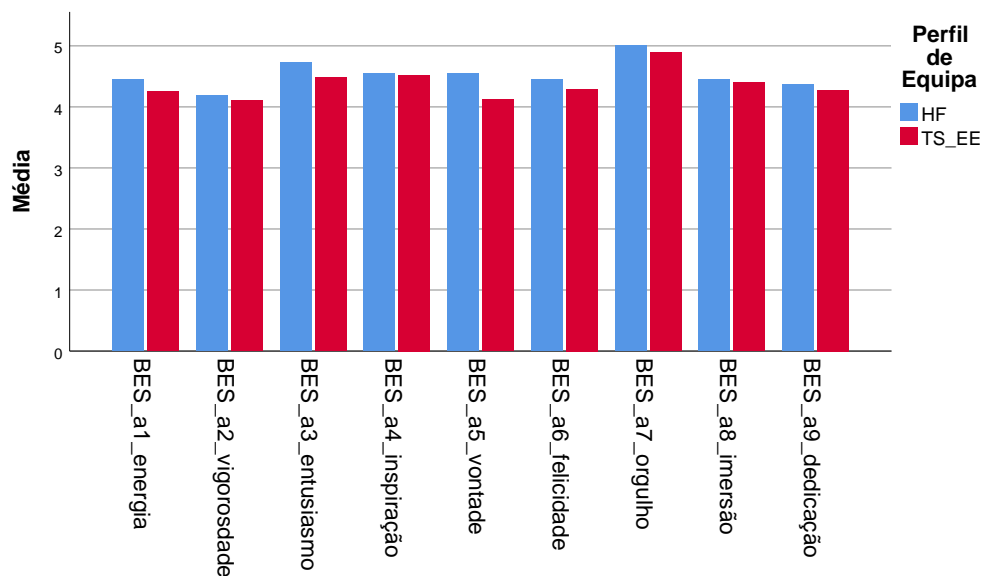
		t-test for Equality of Means		
		df	Sig. (2-tailed)	Mean Difference
BES_a1_energia	Equal variances assumed	74	,557	,208
	Equal variances not assumed	20,609	,415	,208
BES_a2_vigorsdade	Equal variances assumed	74	,855	,074
	Equal variances not assumed	21,855	,792	,074
BES_a3_entusiasmo	Equal variances assumed	74	,469	,250
	Equal variances not assumed	17,296	,372	,250
BES_a4_inspiração	Equal variances assumed	74	,950	,022
	Equal variances not assumed	13,365	,952	,022
BES_a5_vontade	Equal variances assumed	74	,304	,422
	Equal variances not assumed	19,837	,169	,422
BES_a6_felicidade	Equal variances assumed	74	,638	,162
	Equal variances not assumed	28,680	,445	,162
BES_a7_orgulho	Equal variances assumed	74	,749	,108
	Equal variances not assumed	15,056	,724	,108
BES_a8_imersão	Equal variances assumed	74	,884	,055
	Equal variances not assumed	13,711	,884	,055
BES_a9_dedicacão	Equal variances assumed	74	,812	,087
	Equal variances not assumed	17,722	,763	,087

## Independent Samples Test

		t-test for Equality of Means		
		Std. Error Difference	95% Confidence Interval of the Difference	
			Lower	Upper
BES_a1_energia	Equal variances assumed	,353	-,495	,912
	Equal variances not assumed	,250	-,313	,730
BES_a2_vigorosdade	Equal variances assumed	,404	-,732	,880
	Equal variances not assumed	,278	-,503	,651
BES_a3_entusiasmo	Equal variances assumed	,344	-,435	,936
	Equal variances not assumed	,273	-,325	,826
BES_a4_inspiração	Equal variances assumed	,357	-,690	,735
	Equal variances not assumed	,366	-,766	,811
BES_a5_vontade	Equal variances assumed	,408	-,390	1,235
	Equal variances not assumed	,296	-,194	1,039
BES_a6_felicidade	Equal variances assumed	,344	-,522	,847
	Equal variances not assumed	,210	-,266	,591
BES_a7_orgulho	Equal variances assumed	,335	-,560	,776
	Equal variances not assumed	,299	-,530	,746
BES_a8_imersão	Equal variances assumed	,372	-,687	,796
	Equal variances not assumed	,369	-,737	,846
BES_a9_dedicacão	Equal variances assumed	,363	-,636	,809
	Equal variances not assumed	,283	-,508	,681

## GGraph

Barra em Cluster: Média de Bem-Estar por Perfil de Equipa



## T-Test

### Group Statistics

	Perfil de Equipa	N	Mean	Std. Deviation	Std. Error Mean
Perfil_Total_001	HF	11	4,91	,944	,285
	TS_EE	65	4,12	1,606	,199
Perfil_Total_002	HF	11	4,27	1,191	,359
	TS_EE	65	3,32	1,470	,182
Perfil_Total_003	HF	11	5,00	1,342	,405
	TS_EE	65	4,72	1,586	,197
Perfil_Total_004	HF	11	4,55	1,368	,413
	TS_EE	65	4,25	1,759	,218
Perfil_Total_005	HF	11	3,91	1,136	,343
	TS_EE	65	4,09	1,739	,216
Perfil_Total_006	HF	11	4,91	,944	,285
	TS_EE	65	4,42	1,520	,188
Perfil_Total_007	HF	11	4,82	,982	,296
	TS_EE	65	4,45	1,490	,185
Perfil_Total_008	HF	11	4,91	1,044	,315
	TS_EE	65	4,49	1,491	,185
Perfil_Total_009	HF	11	4,91	1,044	,315
	TS_EE	65	4,54	1,359	,169

### Group Statistics

	Perfil de Equipa	N	Mean	Std. Deviation	Std. Error Mean
Perfil_Total_010	HF	11	4,27	1,555	,469
	TS_EE	65	4,38	1,444	,179
Perfil_Total_011	HF	11	3,09	1,446	,436
	TS_EE	65	3,78	1,536	,191
Perfil_Total_012	HF	11	5,18	,874	,263
	TS_EE	65	4,60	1,247	,155
Perfil_Total_013	HF	11	4,64	,809	,244
	TS_EE	65	4,28	1,375	,171
Perfil_Total_014	HF	11	4,45	1,440	,434
	TS_EE	65	4,54	1,404	,174
Perfil_Total_015	HF	11	3,09	1,221	,368
	TS_EE	65	3,22	1,691	,210
Perfil_Total_016	HF	11	4,09	1,578	,476
	TS_EE	65	4,12	1,474	,183
Perfil_Total_017	HF	11	4,64	1,362	,411
	TS_EE	65	4,12	1,505	,187
Perfil_Total_018	HF	11	4,55	1,508	,455
	TS_EE	65	4,38	1,646	,204
Perfil_Total_019	HF	11	2,64	1,286	,388
	TS_EE	65	2,62	1,774	,220
Perfil_Total_020	HF	11	3,91	1,446	,436
	TS_EE	65	4,11	1,786	,222
Perfil_Total_021	HF	11	4,91	1,221	,368
	TS_EE	65	4,12	1,474	,183
Perfil_Total_022	HF	11	3,73	1,618	,488
	TS_EE	65	3,92	1,717	,213
Perfil_Total_023	HF	11	3,55	2,115	,638
	TS_EE	65	2,60	1,784	,221
Perfil_Total_024	HF	11	3,09	,831	,251
	TS_EE	65	3,83	1,474	,183
Perfil_Total_025	HF	11	5,55	,522	,157
	TS_EE	65	4,58	1,570	,195
Perfil_Total_026	HF	11	4,45	,934	,282
	TS_EE	65	3,69	1,731	,215
Perfil_Total_027	HF	11	4,27	1,794	,541
	TS_EE	65	3,86	1,749	,217
Perfil_Total_028	HF	11	5,00	,894	,270
	TS_EE	65	4,43	1,425	,177

### Group Statistics

	Perfil de Equipa	N	Mean	Std. Deviation	Std. Error Mean
Perfil_Total_029	HF	11	5,18	,982	,296
	TS_EE	65	4,65	1,408	,175
Perfil_Total_030	HF	11	4,36	1,120	,338
	TS_EE	65	4,20	1,679	,208
Perfil_Total_031	HF	11	4,55	1,214	,366
	TS_EE	65	4,66	1,203	,149
Perfil_Total_032	HF	11	5,36	,674	,203
	TS_EE	65	4,80	1,214	,151
Perfil_Total_033	HF	11	1,82	1,079	,325
	TS_EE	65	1,85	1,502	,186
Perfil_Total_034	HF	11	4,09	1,640	,495
	TS_EE	65	4,28	1,576	,196
Perfil_Total_035	HF	11	4,18	1,250	,377
	TS_EE	65	3,97	1,610	,200
Perfil_Total_036	HF	11	4,09	1,514	,456
	TS_EE	65	4,69	1,334	,165
Perfil_Total_037	HF	11	4,36	1,567	,472
	TS_EE	65	4,11	1,532	,190
Perfil_Total_038	HF	11	4,27	1,191	,359
	TS_EE	65	3,86	1,845	,229
Perfil_Total_039	HF	11	4,82	,751	,226
	TS_EE	65	4,66	1,680	,208
Perfil_Total_040	HF	11	4,00	1,095	,330
	TS_EE	65	3,85	1,660	,206
Perfil_Total_041	HF	11	4,64	1,206	,364
	TS_EE	65	4,03	1,414	,175
Perfil_Total_042	HF	11	4,00	1,549	,467
	TS_EE	65	3,51	1,804	,224
Perfil_Total_043	HF	11	3,73	2,284	,689
	TS_EE	65	2,38	1,568	,195
Perfil_Total_044	HF	11	2,64	1,433	,432
	TS_EE	65	2,54	1,480	,184
Perfil_Total_045	HF	11	3,27	1,849	,557
	TS_EE	65	4,29	1,720	,213
Perfil_Total_046	HF	11	4,27	1,104	,333
	TS_EE	65	4,43	1,436	,178
Perfil_Total_047	HF	11	5,27	1,191	,359
	TS_EE	65	4,11	2,216	,275

### Group Statistics

	Perfil de Equipa	N	Mean	Std. Deviation	Std. Error Mean
Perfil_Total_048	HF	11	4,91	,539	,163
	TS_EE	65	4,65	1,374	,170
Perfil_Total_049	HF	11	5,45	,522	,157
	TS_EE	65	4,75	1,511	,187
Perfil_Total_050	HF	11	4,36	,809	,244
	TS_EE	65	4,06	1,467	,182
Perfil_Total_051	HF	11	4,27	1,555	,469
	TS_EE	65	4,31	1,236	,153
Perfil_Total_052	HF	11	4,45	1,293	,390
	TS_EE	65	4,69	1,236	,153
Perfil_Total_053	HF	11	2,64	1,286	,388
	TS_EE	65	3,54	1,705	,212
Perfil_Total_054	HF	11	4,27	1,421	,428
	TS_EE	65	3,52	1,669	,207
Perfil_Total_055	HF	11	4,27	1,618	,488
	TS_EE	65	4,32	1,678	,208
Perfil_Total_056	HF	11	3,91	1,640	,495
	TS_EE	65	3,63	1,682	,209
Perfil_Total_057	HF	11	4,64	,924	,279
	TS_EE	65	4,34	1,203	,149
Perfil_Total_058	HF	11	4,45	1,128	,340
	TS_EE	65	4,65	1,441	,179
Perfil_Total_059	HF	11	3,91	1,375	,415
	TS_EE	65	3,88	1,546	,192
Perfil_Total_060	HF	11	5,00	,894	,270
	TS_EE	65	4,74	1,278	,159
Perfil_Total_061	HF	11	2,91	1,578	,476
	TS_EE	65	3,23	1,647	,204
Perfil_Total_062	HF	11	5,09	,831	,251
	TS_EE	65	4,23	1,508	,187
Perfil_Total_063	HF	11	2,36	2,014	,607
	TS_EE	65	2,26	2,196	,272
Perfil_Total_064	HF	11	5,27	,647	,195
	TS_EE	65	4,69	1,345	,167
Perfil_Total_065	HF	11	3,82	1,722	,519
	TS_EE	65	4,31	1,600	,198
Perfil_Total_066	HF	11	3,73	1,902	,574
	TS_EE	65	3,89	1,512	,187

### Group Statistics

	Perfil de Equipa	N	Mean	Std. Deviation	Std. Error Mean
Perfil_Total_067	HF	11	4,91	,831	,251
	TS_EE	65	4,49	1,371	,170
Perfil_Total_068	HF	11	4,64	1,027	,310
	TS_EE	65	4,40	1,466	,182
Perfil_Total_069	HF	11	2,82	1,471	,444
	TS_EE	65	2,72	1,526	,189
Perfil_Total_070	HF	11	4,73	1,489	,449
	TS_EE	65	4,31	1,776	,220
Perfil_Total_071	HF	11	5,00	,632	,191
	TS_EE	65	4,42	1,467	,182
Perfil_Total_072	HF	11	4,55	1,036	,312
	TS_EE	65	4,25	1,640	,203
Perfil_Total_073	HF	11	4,00	1,183	,357
	TS_EE	65	3,48	1,659	,206
Perfil_Total_074	HF	11	4,00	1,732	,522
	TS_EE	65	4,23	1,487	,184
Perfil_Total_075	HF	11	3,18	1,250	,377
	TS_EE	65	2,88	1,709	,212
Perfil_Total_076	HF	11	5,09	,944	,285
	TS_EE	65	4,71	1,234	,153
Perfil_Total_077	HF	11	5,00	,447	,135
	TS_EE	65	4,58	1,446	,179
Perfil_Total_078	HF	11	4,09	1,136	,343
	TS_EE	65	3,52	1,687	,209
Perfil_Total_079	HF	11	3,55	1,214	,366
	TS_EE	65	3,02	1,691	,210
Perfil_Total_080	HF	11	4,00	1,095	,330
	TS_EE	65	3,80	1,651	,205
Perfil_Total_081	HF	11	2,64	1,433	,432
	TS_EE	65	3,09	1,860	,231
Perfil_Total_082	HF	11	4,91	,944	,285
	TS_EE	65	3,86	1,722	,214
Perfil_Total_083	HF	11	5,45	,522	,157
	TS_EE	65	4,58	1,424	,177
Perfil_Total_084	HF	11	4,82	1,601	,483
	TS_EE	65	1,89	1,669	,207
Perfil_Total_085	HF	11	3,27	1,954	,589
	TS_EE	65	2,83	1,876	,233

### Group Statistics

	Perfil de Equipa	N	Mean	Std. Deviation	Std. Error Mean
Perfil_Total_086	HF	11	4,82	,751	,226
	TS_EE	65	4,51	1,252	,155
Perfil_Total_087	HF	11	5,00	1,183	,357
	TS_EE	65	4,09	1,774	,220
Perfil_Total_088	HF	11	3,91	1,640	,495
	TS_EE	65	4,05	1,681	,209
Perfil_Total_089	HF	11	4,18	1,662	,501
	TS_EE	65	4,15	1,679	,208
Perfil_Total_090	HF	11	4,73	,786	,237
	TS_EE	65	4,49	1,239	,154
Perfil_Total_091	HF	11	4,45	1,508	,455
	TS_EE	65	3,86	1,952	,242
Perfil_Total_092	HF	11	3,82	1,328	,400
	TS_EE	65	3,60	1,675	,208
Perfil_Total_093	HF	11	2,55	1,214	,366
	TS_EE	65	2,60	1,599	,198
Perfil_Total_094	HF	11	5,09	,701	,211
	TS_EE	65	4,74	1,564	,194
Perfil_Total_095	HF	11	4,55	1,214	,366
	TS_EE	65	3,82	1,713	,212
Perfil_Total_096	HF	11	4,82	,751	,226
	TS_EE	65	4,45	1,415	,175
Perfil_Total_097	HF	11	4,91	,701	,211
	TS_EE	65	4,38	1,476	,183
Perfil_Total_098	HF	11	4,64	1,027	,310
	TS_EE	65	3,25	1,961	,243
Perfil_Total_099	HF	11	4,36	1,502	,453
	TS_EE	65	3,69	1,802	,224
Perfil_Total_100	HF	11	4,82	1,401	,423
	TS_EE	65	4,31	1,740	,216

### Independent Samples Test

		Levene's Test for Equality of Variances		t-test for Equality of Means	
		F	Sig.	t	df
Perfil_Total_001	Equal variances assumed	2,790	,099	1,573	74
	Equal variances not assumed			2,263	21,392
Perfil_Total_002	Equal variances assumed	2,822	,097	2,030	74
	Equal variances not assumed			2,358	15,656
Perfil_Total_003	Equal variances assumed	1,362	,247	,546	74
	Equal variances not assumed			,616	15,158
Perfil_Total_004	Equal variances assumed	1,378	,244	,536	74
	Equal variances not assumed			,641	16,178
Perfil_Total_005	Equal variances assumed	3,551	,063	-,337	74
	Equal variances not assumed			-,453	19,028
Perfil_Total_006	Equal variances assumed	6,166	,015	1,041	74
	Equal variances not assumed			1,446	20,092
Perfil_Total_007	Equal variances assumed	3,975	,050	,797	74
	Equal variances not assumed			1,066	18,868
Perfil_Total_008	Equal variances assumed	4,321	,041	,889	74
	Equal variances not assumed			1,141	17,755
Perfil_Total_009	Equal variances assumed	4,593	,035	,861	74
	Equal variances not assumed			1,038	16,339
Perfil_Total_010	Equal variances assumed	,011	,916	-,235	74
	Equal variances not assumed			-,223	13,086

## Independent Samples Test

		t-test for Equality of Means		
		Sig. (2-tailed)	Mean Difference	Std. Error Difference
Perfil_Total_001	Equal variances assumed	,120	,786	,500
	Equal variances not assumed	,034	,786	,347
Perfil_Total_002	Equal variances assumed	,046	,950	,468
	Equal variances not assumed	,032	,950	,403
Perfil_Total_003	Equal variances assumed	,587	,277	,507
	Equal variances not assumed	,547	,277	,450
Perfil_Total_004	Equal variances assumed	,593	,299	,558
	Equal variances not assumed	,530	,299	,467
Perfil_Total_005	Equal variances assumed	,737	-,183	,544
	Equal variances not assumed	,656	-,183	,405
Perfil_Total_006	Equal variances assumed	,301	,494	,474
	Equal variances not assumed	,163	,494	,341
Perfil_Total_007	Equal variances assumed	,428	,372	,467
	Equal variances not assumed	,300	,372	,349
Perfil_Total_008	Equal variances assumed	,377	,417	,469
	Equal variances not assumed	,269	,417	,365
Perfil_Total_009	Equal variances assumed	,392	,371	,431
	Equal variances not assumed	,315	,371	,357
Perfil_Total_010	Equal variances assumed	,815	-,112	,476
	Equal variances not assumed	,827	-,112	,502

## Independent Samples Test

		t-test for Equality of Means	
		95% Confidence Interval of the Difference	
		Lower	Upper
Perfil_Total_001	Equal variances assumed	-,210	1,782
	Equal variances not assumed	,064	1,508
Perfil_Total_002	Equal variances assumed	,017	1,882
	Equal variances not assumed	,094	1,805
Perfil_Total_003	Equal variances assumed	-,733	1,287
	Equal variances not assumed	-,681	1,235
Perfil_Total_004	Equal variances assumed	-,813	1,411
	Equal variances not assumed	-,689	1,288
Perfil_Total_005	Equal variances assumed	-1,268	,902
	Equal variances not assumed	-1,030	,664
Perfil_Total_006	Equal variances assumed	-,452	1,439
	Equal variances not assumed	-,218	1,206
Perfil_Total_007	Equal variances assumed	-,558	1,302
	Equal variances not assumed	-,359	1,103
Perfil_Total_008	Equal variances assumed	-,518	1,351
	Equal variances not assumed	-,351	1,185
Perfil_Total_009	Equal variances assumed	-,487	1,229
	Equal variances not assumed	-,385	1,127
Perfil_Total_010	Equal variances assumed	-1,060	,836
	Equal variances not assumed	-1,195	,972

### Independent Samples Test

		Levene's Test for Equality of Variances		t-test for Equality of Means	
		F	Sig.	t	df
Perfil_Total_011	Equal variances assumed	,045	,832	-1,396	74
	Equal variances not assumed			-1,458	14,103
Perfil_Total_012	Equal variances assumed	2,433	,123	1,482	74
	Equal variances not assumed			1,904	17,757
Perfil_Total_013	Equal variances assumed	2,894	,093	,840	74
	Equal variances not assumed			1,208	21,370
Perfil_Total_014	Equal variances assumed	,189	,665	-,183	74
	Equal variances not assumed			-,179	13,423
Perfil_Total_015	Equal variances assumed	3,191	,078	-,233	74
	Equal variances not assumed			-,294	17,260
Perfil_Total_016	Equal variances assumed	,001	,979	-,066	74
	Equal variances not assumed			-,063	13,125
Perfil_Total_017	Equal variances assumed	,853	,359	1,059	74
	Equal variances not assumed			1,138	14,466
Perfil_Total_018	Equal variances assumed	,453	,503	,303	74
	Equal variances not assumed			,323	14,350
Perfil_Total_019	Equal variances assumed	3,552	,063	,037	74
	Equal variances not assumed			,047	17,194
Perfil_Total_020	Equal variances assumed	3,209	,077	-,349	74
	Equal variances not assumed			-,406	15,670

## Independent Samples Test

		t-test for Equality of Means		
		Sig. (2-tailed)	Mean Difference	Std. Error Difference
Perfil_Total_011	Equal variances assumed	,167	-,694	,497
	Equal variances not assumed	,167	-,694	,476
Perfil_Total_012	Equal variances assumed	,142	,582	,392
	Equal variances not assumed	,073	,582	,306
Perfil_Total_013	Equal variances assumed	,404	,359	,428
	Equal variances not assumed	,240	,359	,298
Perfil_Total_014	Equal variances assumed	,856	-,084	,459
	Equal variances not assumed	,860	-,084	,468
Perfil_Total_015	Equal variances assumed	,816	-,124	,533
	Equal variances not assumed	,772	-,124	,424
Perfil_Total_016	Equal variances assumed	,947	-,032	,485
	Equal variances not assumed	,951	-,032	,510
Perfil_Total_017	Equal variances assumed	,293	,513	,485
	Equal variances not assumed	,274	,513	,451
Perfil_Total_018	Equal variances assumed	,763	,161	,531
	Equal variances not assumed	,752	,161	,498
Perfil_Total_019	Equal variances assumed	,970	,021	,559
	Equal variances not assumed	,963	,021	,446
Perfil_Total_020	Equal variances assumed	,728	-,199	,569
	Equal variances not assumed	,690	-,199	,489

## Independent Samples Test

		t-test for Equality of Means	
		95% Confidence Interval of the Difference	
		Lower	Upper
Perfil_Total_011	Equal variances assumed	-1,684	,296
	Equal variances not assumed	-1,713	,326
Perfil_Total_012	Equal variances assumed	-,200	1,364
	Equal variances not assumed	-,061	1,224
Perfil_Total_013	Equal variances assumed	-,493	1,212
	Equal variances not assumed	-,259	,978
Perfil_Total_014	Equal variances assumed	-,999	,831
	Equal variances not assumed	-1,091	,923
Perfil_Total_015	Equal variances assumed	-1,187	,938
	Equal variances not assumed	-1,017	,768
Perfil_Total_016	Equal variances assumed	-,999	,935
	Equal variances not assumed	-1,132	1,068
Perfil_Total_017	Equal variances assumed	-,453	1,479
	Equal variances not assumed	-,451	1,478
Perfil_Total_018	Equal variances assumed	-,897	1,218
	Equal variances not assumed	-,905	1,227
Perfil_Total_019	Equal variances assumed	-1,094	1,136
	Equal variances not assumed	-,919	,961
Perfil_Total_020	Equal variances assumed	-1,332	,935
	Equal variances not assumed	-1,237	,840

### Independent Samples Test

		Levene's Test for Equality of Variances		t-test for Equality of Means	
		F	Sig.	t	df
Perfil_Total_021	Equal variances assumed	,502	,481	1,672	74
	Equal variances not assumed			1,912	15,393
Perfil_Total_022	Equal variances assumed	,383	,538	-,353	74
	Equal variances not assumed			-,368	14,093
Perfil_Total_023	Equal variances assumed	,230	,633	1,583	74
	Equal variances not assumed			1,401	12,524
Perfil_Total_024	Equal variances assumed	3,269	,075	-1,615	74
	Equal variances not assumed			-2,385	22,489
Perfil_Total_025	Equal variances assumed	9,016	,004	2,001	74
	Equal variances not assumed			3,837	46,863
Perfil_Total_026	Equal variances assumed	7,112	,009	1,420	74
	Equal variances not assumed			2,152	23,750
Perfil_Total_027	Equal variances assumed	,009	,923	,719	74
	Equal variances not assumed			,706	13,421
Perfil_Total_028	Equal variances assumed	7,358	,008	1,279	74
	Equal variances not assumed			1,765	19,862
Perfil_Total_029	Equal variances assumed	2,881	,094	1,210	74
	Equal variances not assumed			1,559	17,836
Perfil_Total_030	Equal variances assumed	2,761	,101	,311	74
	Equal variances not assumed			,412	18,630

## Independent Samples Test

		t-test for Equality of Means		
		Sig. (2-tailed)	Mean Difference	Std. Error Difference
Perfil_Total_021	Equal variances assumed	,099	,786	,470
	Equal variances not assumed	,075	,786	,411
Perfil_Total_022	Equal variances assumed	,725	-,196	,555
	Equal variances not assumed	,718	-,196	,532
Perfil_Total_023	Equal variances assumed	,118	,945	,597
	Equal variances not assumed	,186	,945	,675
Perfil_Total_024	Equal variances assumed	,110	-,740	,458
	Equal variances not assumed	,026	-,740	,310
Perfil_Total_025	Equal variances assumed	,049	,961	,480
	Equal variances not assumed	,000	,961	,250
Perfil_Total_026	Equal variances assumed	,160	,762	,537
	Equal variances not assumed	,042	,762	,354
Perfil_Total_027	Equal variances assumed	,475	,411	,572
	Equal variances not assumed	,493	,411	,583
Perfil_Total_028	Equal variances assumed	,205	,569	,445
	Equal variances not assumed	,093	,569	,322
Perfil_Total_029	Equal variances assumed	,230	,536	,443
	Equal variances not assumed	,137	,536	,344
Perfil_Total_030	Equal variances assumed	,757	,164	,526
	Equal variances not assumed	,685	,164	,397

## Independent Samples Test

		t-test for Equality of Means	
		95% Confidence Interval of the Difference	
		Lower	Upper
Perfil_Total_021	Equal variances assumed	-,151	1,723
	Equal variances not assumed	-,088	1,660
Perfil_Total_022	Equal variances assumed	-1,303	,911
	Equal variances not assumed	-1,337	,945
Perfil_Total_023	Equal variances assumed	-,245	2,135
	Equal variances not assumed	-,518	2,409
Perfil_Total_024	Equal variances assumed	-1,652	,173
	Equal variances not assumed	-1,382	-,097
Perfil_Total_025	Equal variances assumed	,004	1,918
	Equal variances not assumed	,457	1,465
Perfil_Total_026	Equal variances assumed	-,307	1,832
	Equal variances not assumed	,031	1,494
Perfil_Total_027	Equal variances assumed	-,729	1,551
	Equal variances not assumed	-,844	1,666
Perfil_Total_028	Equal variances assumed	-,318	1,456
	Equal variances not assumed	-,104	1,242
Perfil_Total_029	Equal variances assumed	-,347	1,418
	Equal variances not assumed	-,187	1,258
Perfil_Total_030	Equal variances assumed	-,885	1,213
	Equal variances not assumed	-,668	,995

### Independent Samples Test

		Levene's Test for Equality of Variances		t-test for Equality of Means	
		F	Sig.	t	df
Perfil_Total_031	Equal variances assumed	,179	,674	-,296	74
	Equal variances not assumed			-,294	13,541
Perfil_Total_032	Equal variances assumed	1,859	,177	1,495	74
	Equal variances not assumed			2,228	22,919
Perfil_Total_033	Equal variances assumed	,667	,417	-,059	74
	Equal variances not assumed			-,075	17,351
Perfil_Total_034	Equal variances assumed	,363	,549	-,360	74
	Equal variances not assumed			-,350	13,318
Perfil_Total_035	Equal variances assumed	1,841	,179	,416	74
	Equal variances not assumed			,498	16,200
Perfil_Total_036	Equal variances assumed	,118	,732	-1,357	74
	Equal variances not assumed			-1,239	12,766
Perfil_Total_037	Equal variances assumed	,000	,987	,511	74
	Equal variances not assumed			,503	13,444
Perfil_Total_038	Equal variances assumed	2,582	,112	,712	74
	Equal variances not assumed			,966	19,272
Perfil_Total_039	Equal variances assumed	6,968	,010	,303	74
	Equal variances not assumed			,509	30,677
Perfil_Total_040	Equal variances assumed	4,427	,039	,296	74
	Equal variances not assumed			,395	18,844

## Independent Samples Test

		t-test for Equality of Means		
		Sig. (2-tailed)	Mean Difference	Std. Error Difference
Perfil_Total_031	Equal variances assumed	,768	-,116	,393
	Equal variances not assumed	,773	-,116	,395
Perfil_Total_032	Equal variances assumed	,139	,564	,377
	Equal variances not assumed	,036	,564	,253
Perfil_Total_033	Equal variances assumed	,953	-,028	,474
	Equal variances not assumed	,941	-,028	,375
Perfil_Total_034	Equal variances assumed	,720	-,186	,517
	Equal variances not assumed	,732	-,186	,532
Perfil_Total_035	Equal variances assumed	,678	,213	,511
	Equal variances not assumed	,625	,213	,427
Perfil_Total_036	Equal variances assumed	,179	-,601	,443
	Equal variances not assumed	,238	-,601	,485
Perfil_Total_037	Equal variances assumed	,611	,256	,501
	Equal variances not assumed	,623	,256	,509
Perfil_Total_038	Equal variances assumed	,478	,411	,577
	Equal variances not assumed	,346	,411	,426
Perfil_Total_039	Equal variances assumed	,763	,157	,517
	Equal variances not assumed	,614	,157	,308
Perfil_Total_040	Equal variances assumed	,768	,154	,520
	Equal variances not assumed	,697	,154	,389

## Independent Samples Test

		t-test for Equality of Means	
		95% Confidence Interval of the Difference	
		Lower	Upper
Perfil_Total_031	Equal variances assumed	-,898	,666
	Equal variances not assumed	-,966	,734
Perfil_Total_032	Equal variances assumed	-,188	1,315
	Equal variances not assumed	,040	1,087
Perfil_Total_033	Equal variances assumed	-,971	,916
	Equal variances not assumed	-,818	,762
Perfil_Total_034	Equal variances assumed	-1,216	,844
	Equal variances not assumed	-1,332	,960
Perfil_Total_035	Equal variances assumed	-,805	1,230
	Equal variances not assumed	-,691	1,116
Perfil_Total_036	Equal variances assumed	-1,485	,282
	Equal variances not assumed	-1,652	,449
Perfil_Total_037	Equal variances assumed	-,742	1,254
	Equal variances not assumed	-,840	1,352
Perfil_Total_038	Equal variances assumed	-,739	1,561
	Equal variances not assumed	-,479	1,301
Perfil_Total_039	Equal variances assumed	-,874	1,187
	Equal variances not assumed	-,471	,784
Perfil_Total_040	Equal variances assumed	-,883	1,191
	Equal variances not assumed	-,661	,969

### Independent Samples Test

		Levene's Test for Equality of Variances		t-test for Equality of Means	
		F	Sig.	t	df
Perfil_Total_041	Equal variances assumed	,094	,760	1,339	74
	Equal variances not assumed			1,500	15,065
Perfil_Total_042	Equal variances assumed	2,867	,095	,852	74
	Equal variances not assumed			,951	14,992
Perfil_Total_043	Equal variances assumed	5,861	,018	2,447	74
	Equal variances not assumed			1,876	11,647
Perfil_Total_044	Equal variances assumed	,132	,717	,204	74
	Equal variances not assumed			,209	13,862
Perfil_Total_045	Equal variances assumed	,164	,687	-1,799	74
	Equal variances not assumed			-1,708	13,102
Perfil_Total_046	Equal variances assumed	1,729	,193	-,347	74
	Equal variances not assumed			-,419	16,339
Perfil_Total_047	Equal variances assumed	16,208	,000	1,696	74
	Equal variances not assumed			2,576	23,871
Perfil_Total_048	Equal variances assumed	10,789	,002	,624	74
	Equal variances not assumed			1,116	37,053
Perfil_Total_049	Equal variances assumed	4,911	,030	1,516	74
	Equal variances not assumed			2,863	44,449
Perfil_Total_050	Equal variances assumed	2,227	,140	,664	74
	Equal variances not assumed			,993	23,109

## Independent Samples Test

		t-test for Equality of Means		
		Sig. (2-tailed)	Mean Difference	Std. Error Difference
Perfil_Total_041	Equal variances assumed	,185	,606	,452
	Equal variances not assumed	,154	,606	,404
Perfil_Total_042	Equal variances assumed	,397	,492	,578
	Equal variances not assumed	,357	,492	,518
Perfil_Total_043	Equal variances assumed	,017	1,343	,549
	Equal variances not assumed	,086	1,343	,716
Perfil_Total_044	Equal variances assumed	,839	,098	,480
	Equal variances not assumed	,838	,098	,470
Perfil_Total_045	Equal variances assumed	,076	-1,020	,567
	Equal variances not assumed	,111	-1,020	,597
Perfil_Total_046	Equal variances assumed	,729	-,158	,455
	Equal variances not assumed	,681	-,158	,377
Perfil_Total_047	Equal variances assumed	,094	1,165	,687
	Equal variances not assumed	,017	1,165	,452
Perfil_Total_048	Equal variances assumed	,535	,263	,422
	Equal variances not assumed	,272	,263	,236
Perfil_Total_049	Equal variances assumed	,134	,701	,462
	Equal variances not assumed	,006	,701	,245
Perfil_Total_050	Equal variances assumed	,509	,302	,455
	Equal variances not assumed	,331	,302	,304

## Independent Samples Test

		t-test for Equality of Means	
		95% Confidence Interval of the Difference	
		Lower	Upper
Perfil_Total_041	Equal variances assumed	-,296	1,507
	Equal variances not assumed	-,255	1,466
Perfil_Total_042	Equal variances assumed	-,659	1,643
	Equal variances not assumed	-,612	1,596
Perfil_Total_043	Equal variances assumed	,249	2,436
	Equal variances not assumed	-,222	2,907
Perfil_Total_044	Equal variances assumed	-,859	1,055
	Equal variances not assumed	-,910	1,106
Perfil_Total_045	Equal variances assumed	-2,149	,110
	Equal variances not assumed	-2,308	,269
Perfil_Total_046	Equal variances assumed	-1,065	,749
	Equal variances not assumed	-,957	,641
Perfil_Total_047	Equal variances assumed	-,204	2,534
	Equal variances not assumed	,232	2,099
Perfil_Total_048	Equal variances assumed	-,577	1,103
	Equal variances not assumed	-,214	,740
Perfil_Total_049	Equal variances assumed	-,220	1,622
	Equal variances not assumed	,208	1,194
Perfil_Total_050	Equal variances assumed	-,605	1,209
	Equal variances not assumed	-,327	,931

### Independent Samples Test

		Levene's Test for Equality of Variances		t-test for Equality of Means	
		F	Sig.	t	df
Perfil_Total_051	Equal variances assumed	,798	,375	-,084	74
	Equal variances not assumed			-,071	12,232
Perfil_Total_052	Equal variances assumed	,146	,703	-,586	74
	Equal variances not assumed			-,567	13,283
Perfil_Total_053	Equal variances assumed	1,510	,223	-1,672	74
	Equal variances not assumed			-2,042	16,606
Perfil_Total_054	Equal variances assumed	,935	,337	1,404	74
	Equal variances not assumed			1,576	15,087
Perfil_Total_055	Equal variances assumed	1,420	,237	-,092	74
	Equal variances not assumed			-,095	13,899
Perfil_Total_056	Equal variances assumed	,103	,749	,509	74
	Equal variances not assumed			,518	13,808
Perfil_Total_057	Equal variances assumed	1,744	,191	,782	74
	Equal variances not assumed			,942	16,339
Perfil_Total_058	Equal variances assumed	1,610	,209	-,419	74
	Equal variances not assumed			-,499	16,091
Perfil_Total_059	Equal variances assumed	,345	,559	,065	74
	Equal variances not assumed			,070	14,633
Perfil_Total_060	Equal variances assumed	4,559	,036	,650	74
	Equal variances not assumed			,836	17,774

## Independent Samples Test

		t-test for Equality of Means		
		Sig. (2-tailed)	Mean Difference	Std. Error Difference
Perfil_Total_051	Equal variances assumed	,934	-,035	,419
	Equal variances not assumed	,945	-,035	,493
Perfil_Total_052	Equal variances assumed	,560	-,238	,406
	Equal variances not assumed	,580	-,238	,419
Perfil_Total_053	Equal variances assumed	,099	-,902	,540
	Equal variances not assumed	,057	-,902	,442
Perfil_Total_054	Equal variances assumed	,164	,750	,534
	Equal variances not assumed	,136	,750	,476
Perfil_Total_055	Equal variances assumed	,927	-,050	,544
	Equal variances not assumed	,926	-,050	,530
Perfil_Total_056	Equal variances assumed	,612	,278	,547
	Equal variances not assumed	,612	,278	,537
Perfil_Total_057	Equal variances assumed	,437	,298	,381
	Equal variances not assumed	,360	,298	,316
Perfil_Total_058	Equal variances assumed	,676	-,192	,457
	Equal variances not assumed	,625	-,192	,384
Perfil_Total_059	Equal variances assumed	,949	,032	,497
	Equal variances not assumed	,945	,032	,457
Perfil_Total_060	Equal variances assumed	,517	,262	,402
	Equal variances not assumed	,414	,262	,313

## Independent Samples Test

		t-test for Equality of Means	
		95% Confidence Interval of the Difference	
		Lower	Upper
Perfil_Total_051	Equal variances assumed	-,869	,799
	Equal variances not assumed	-1,108	1,038
Perfil_Total_052	Equal variances assumed	-1,046	,571
	Equal variances not assumed	-1,141	,666
Perfil_Total_053	Equal variances assumed	-1,977	,173
	Equal variances not assumed	-1,836	,032
Perfil_Total_054	Equal variances assumed	-,314	1,813
	Equal variances not assumed	-,264	1,763
Perfil_Total_055	Equal variances assumed	-1,135	1,035
	Equal variances not assumed	-1,189	1,088
Perfil_Total_056	Equal variances assumed	-,811	1,368
	Equal variances not assumed	-,875	1,431
Perfil_Total_057	Equal variances assumed	-,461	1,057
	Equal variances not assumed	-,371	,967
Perfil_Total_058	Equal variances assumed	-1,103	,720
	Equal variances not assumed	-1,006	,623
Perfil_Total_059	Equal variances assumed	-,958	1,022
	Equal variances not assumed	-,944	1,008
Perfil_Total_060	Equal variances assumed	-,540	1,063
	Equal variances not assumed	-,396	,919

### Independent Samples Test

		Levene's Test for Equality of Variances		t-test for Equality of Means	
		F	Sig.	t	df
Perfil_Total_061	Equal variances assumed	,001	,970	-,603	74
	Equal variances not assumed			-,621	13,950
Perfil_Total_062	Equal variances assumed	4,861	,031	1,838	74
	Equal variances not assumed			2,750	23,122
Perfil_Total_063	Equal variances assumed	1,368	,246	,144	74
	Equal variances not assumed			,153	14,339
Perfil_Total_064	Equal variances assumed	2,998	,088	1,398	74
	Equal variances not assumed			2,262	27,694
Perfil_Total_065	Equal variances assumed	,096	,758	-,929	74
	Equal variances not assumed			-,881	13,094
Perfil_Total_066	Equal variances assumed	1,661	,201	-,322	74
	Equal variances not assumed			-,274	12,230
Perfil_Total_067	Equal variances assumed	8,084	,006	,975	74
	Equal variances not assumed			1,376	20,639
Perfil_Total_068	Equal variances assumed	2,424	,124	,512	74
	Equal variances not assumed			,658	17,761
Perfil_Total_069	Equal variances assumed	,593	,444	,192	74
	Equal variances not assumed			,197	13,902
Perfil_Total_070	Equal variances assumed	1,481	,227	,740	74
	Equal variances not assumed			,839	15,253

## Independent Samples Test

		t-test for Equality of Means		
		Sig. (2-tailed)	Mean Difference	Std. Error Difference
Perfil_Total_061	Equal variances assumed	,549	-,322	,534
	Equal variances not assumed	,544	-,322	,518
Perfil_Total_062	Equal variances assumed	,070	,860	,468
	Equal variances not assumed	,011	,860	,313
Perfil_Total_063	Equal variances assumed	,886	,102	,708
	Equal variances not assumed	,880	,102	,665
Perfil_Total_064	Equal variances assumed	,166	,580	,415
	Equal variances not assumed	,032	,580	,257
Perfil_Total_065	Equal variances assumed	,356	-,490	,527
	Equal variances not assumed	,394	-,490	,556
Perfil_Total_066	Equal variances assumed	,748	-,165	,512
	Equal variances not assumed	,789	-,165	,603
Perfil_Total_067	Equal variances assumed	,333	,417	,427
	Equal variances not assumed	,184	,417	,303
Perfil_Total_068	Equal variances assumed	,610	,236	,461
	Equal variances not assumed	,519	,236	,359
Perfil_Total_069	Equal variances assumed	,848	,095	,495
	Equal variances not assumed	,847	,095	,482
Perfil_Total_070	Equal variances assumed	,462	,420	,567
	Equal variances not assumed	,414	,420	,500

## Independent Samples Test

		t-test for Equality of Means	
		95% Confidence Interval of the Difference	
		Lower	Upper
Perfil_Total_061	Equal variances assumed	-1,385	,742
	Equal variances not assumed	-1,433	,789
Perfil_Total_062	Equal variances assumed	-,072	1,793
	Equal variances not assumed	,213	1,507
Perfil_Total_063	Equal variances assumed	-1,309	1,513
	Equal variances not assumed	-1,322	1,526
Perfil_Total_064	Equal variances assumed	-,247	1,408
	Equal variances not assumed	,054	1,106
Perfil_Total_065	Equal variances assumed	-1,540	,561
	Equal variances not assumed	-1,689	,710
Perfil_Total_066	Equal variances assumed	-1,185	,855
	Equal variances not assumed	-1,477	1,147
Perfil_Total_067	Equal variances assumed	-,435	1,268
	Equal variances not assumed	-,214	1,047
Perfil_Total_068	Equal variances assumed	-,683	1,156
	Equal variances not assumed	-,519	,992
Perfil_Total_069	Equal variances assumed	-,891	1,082
	Equal variances not assumed	-,940	1,130
Perfil_Total_070	Equal variances assumed	-,711	1,550
	Equal variances not assumed	-,645	1,484

### Independent Samples Test

		Levene's Test for Equality of Variances		t-test for Equality of Means	
		F	Sig.	t	df
Perfil_Total_071	Equal variances assumed	10,827	,002	1,295	74
	Equal variances not assumed			2,218	32,323
Perfil_Total_072	Equal variances assumed	3,354	,071	,584	74
	Equal variances not assumed			,803	19,727
Perfil_Total_073	Equal variances assumed	5,194	,026	1,001	74
	Equal variances not assumed			1,270	17,462
Perfil_Total_074	Equal variances assumed	,027	,870	-,465	74
	Equal variances not assumed			-,417	12,620
Perfil_Total_075	Equal variances assumed	2,497	,118	,565	74
	Equal variances not assumed			,705	17,059
Perfil_Total_076	Equal variances assumed	,743	,391	,980	74
	Equal variances not assumed			1,186	16,406
Perfil_Total_077	Equal variances assumed	10,140	,002	,941	74
	Equal variances not assumed			1,851	51,491
Perfil_Total_078	Equal variances assumed	5,217	,025	1,073	74
	Equal variances not assumed			1,414	18,456
Perfil_Total_079	Equal variances assumed	1,570	,214	,995	74
	Equal variances not assumed			1,257	17,358
Perfil_Total_080	Equal variances assumed	4,286	,042	,387	74
	Equal variances not assumed			,515	18,731

## Independent Samples Test

		t-test for Equality of Means		
		Sig. (2-tailed)	Mean Difference	Std. Error Difference
Perfil_Total_071	Equal variances assumed	,199	,585	,451
	Equal variances not assumed	,034	,585	,264
Perfil_Total_072	Equal variances assumed	,561	,299	,512
	Equal variances not assumed	,431	,299	,373
Perfil_Total_073	Equal variances assumed	,320	,523	,523
	Equal variances not assumed	,221	,523	,412
Perfil_Total_074	Equal variances assumed	,643	-,231	,496
	Equal variances not assumed	,684	-,231	,554
Perfil_Total_075	Equal variances assumed	,574	,305	,540
	Equal variances not assumed	,490	,305	,433
Perfil_Total_076	Equal variances assumed	,330	,383	,391
	Equal variances not assumed	,253	,383	,323
Perfil_Total_077	Equal variances assumed	,350	,415	,442
	Equal variances not assumed	,070	,415	,224
Perfil_Total_078	Equal variances assumed	,287	,568	,529
	Equal variances not assumed	,174	,568	,401
Perfil_Total_079	Equal variances assumed	,323	,530	,533
	Equal variances not assumed	,225	,530	,422
Perfil_Total_080	Equal variances assumed	,700	,200	,517
	Equal variances not assumed	,613	,200	,389

## Independent Samples Test

		t-test for Equality of Means	
		95% Confidence Interval of the Difference	
		Lower	Upper
Perfil_Total_071	Equal variances assumed	-,315	1,484
	Equal variances not assumed	,048	1,121
Perfil_Total_072	Equal variances assumed	-,722	1,320
	Equal variances not assumed	-,479	1,077
Perfil_Total_073	Equal variances assumed	-,518	1,565
	Equal variances not assumed	-,344	1,390
Perfil_Total_074	Equal variances assumed	-1,220	,758
	Equal variances not assumed	-1,431	,969
Perfil_Total_075	Equal variances assumed	-,770	1,380
	Equal variances not assumed	-,607	1,217
Perfil_Total_076	Equal variances assumed	-,396	1,162
	Equal variances not assumed	-,300	1,067
Perfil_Total_077	Equal variances assumed	-,465	1,295
	Equal variances not assumed	-,035	,866
Perfil_Total_078	Equal variances assumed	-,487	1,623
	Equal variances not assumed	-,274	1,410
Perfil_Total_079	Equal variances assumed	-,532	1,592
	Equal variances not assumed	-,358	1,418
Perfil_Total_080	Equal variances assumed	-,831	1,231
	Equal variances not assumed	-,614	1,014

### Independent Samples Test

		Levene's Test for Equality of Variances		t-test for Equality of Means	
		F	Sig.	t	df
Perfil_Total_081	Equal variances assumed	1,730	,192	-,773	74
	Equal variances not assumed			-,931	16,305
Perfil_Total_082	Equal variances assumed	4,242	,043	1,961	74
	Equal variances not assumed			2,944	23,282
Perfil_Total_083	Equal variances assumed	3,614	,061	1,994	74
	Equal variances not assumed			3,676	40,885
Perfil_Total_084	Equal variances assumed	,549	,461	5,407	74
	Equal variances not assumed			5,570	13,941
Perfil_Total_085	Equal variances assumed	,140	,710	,719	74
	Equal variances not assumed			,698	13,311
Perfil_Total_086	Equal variances assumed	3,351	,071	,796	74
	Equal variances not assumed			1,131	20,895
Perfil_Total_087	Equal variances assumed	2,930	,091	1,632	74
	Equal variances not assumed			2,165	18,636
Perfil_Total_088	Equal variances assumed	,073	,788	-,251	74
	Equal variances not assumed			-,255	13,802
Perfil_Total_089	Equal variances assumed	,094	,760	,051	74
	Equal variances not assumed			,052	13,688
Perfil_Total_090	Equal variances assumed	3,267	,075	,607	74
	Equal variances not assumed			,832	19,629

## Independent Samples Test

		t-test for Equality of Means		
		Sig. (2-tailed)	Mean Difference	Std. Error Difference
Perfil_Total_081	Equal variances assumed	,442	-,456	,590
	Equal variances not assumed	,366	-,456	,490
Perfil_Total_082	Equal variances assumed	,054	1,048	,534
	Equal variances not assumed	,007	1,048	,356
Perfil_Total_083	Equal variances assumed	,050	,870	,436
	Equal variances not assumed	,001	,870	,237
Perfil_Total_084	Equal variances assumed	,000	2,926	,541
	Equal variances not assumed	,000	2,926	,525
Perfil_Total_085	Equal variances assumed	,475	,442	,615
	Equal variances not assumed	,497	,442	,633
Perfil_Total_086	Equal variances assumed	,428	,310	,390
	Equal variances not assumed	,271	,310	,274
Perfil_Total_087	Equal variances assumed	,107	,908	,556
	Equal variances not assumed	,044	,908	,419
Perfil_Total_088	Equal variances assumed	,803	-,137	,546
	Equal variances not assumed	,802	-,137	,537
Perfil_Total_089	Equal variances assumed	,959	,028	,547
	Equal variances not assumed	,960	,028	,543
Perfil_Total_090	Equal variances assumed	,546	,235	,387
	Equal variances not assumed	,416	,235	,283

## Independent Samples Test

		t-test for Equality of Means	
		95% Confidence Interval of the Difference	
		Lower	Upper
Perfil_Total_081	Equal variances assumed	-1,631	,719
	Equal variances not assumed	-1,493	,581
Perfil_Total_082	Equal variances assumed	-,017	2,112
	Equal variances not assumed	,312	1,783
Perfil_Total_083	Equal variances assumed	,001	1,739
	Equal variances not assumed	,392	1,348
Perfil_Total_084	Equal variances assumed	1,848	4,004
	Equal variances not assumed	1,799	4,053
Perfil_Total_085	Equal variances assumed	-,783	1,667
	Equal variances not assumed	-,923	1,807
Perfil_Total_086	Equal variances assumed	-,467	1,088
	Equal variances not assumed	-,260	,881
Perfil_Total_087	Equal variances assumed	-,201	2,016
	Equal variances not assumed	,029	1,786
Perfil_Total_088	Equal variances assumed	-1,226	,951
	Equal variances not assumed	-1,290	1,016
Perfil_Total_089	Equal variances assumed	-1,061	1,117
	Equal variances not assumed	-1,139	1,195
Perfil_Total_090	Equal variances assumed	-,537	1,007
	Equal variances not assumed	-,355	,825

### Independent Samples Test

		Levene's Test for Equality of Variances		t-test for Equality of Means	
		F	Sig.	t	df
Perfil_Total_091	Equal variances assumed	2,751	,101	,958	74
	Equal variances not assumed			1,152	16,272
Perfil_Total_092	Equal variances assumed	2,848	,096	,410	74
	Equal variances not assumed			,484	15,930
Perfil_Total_093	Equal variances assumed	1,230	,271	-,108	74
	Equal variances not assumed			-,131	16,515
Perfil_Total_094	Equal variances assumed	4,354	,040	,732	74
	Equal variances not assumed			1,229	30,579
Perfil_Total_095	Equal variances assumed	1,261	,265	1,354	74
	Equal variances not assumed			1,725	17,568
Perfil_Total_096	Equal variances assumed	1,759	,189	,849	74
	Equal variances not assumed			1,299	24,257
Perfil_Total_097	Equal variances assumed	5,513	,022	1,152	74
	Equal variances not assumed			1,876	28,171
Perfil_Total_098	Equal variances assumed	8,621	,004	2,290	74
	Equal variances not assumed			3,531	24,679
Perfil_Total_099	Equal variances assumed	2,089	,153	1,167	74
	Equal variances not assumed			1,330	15,327
Perfil_Total_100	Equal variances assumed	1,230	,271	,922	74
	Equal variances not assumed			1,076	15,735

## Independent Samples Test

		t-test for Equality of Means		
		Sig. (2-tailed)	Mean Difference	Std. Error Difference
Perfil_Total_091	Equal variances assumed	,341	,593	,619
	Equal variances not assumed	,266	,593	,515
Perfil_Total_092	Equal variances assumed	,683	,218	,532
	Equal variances not assumed	,635	,218	,451
Perfil_Total_093	Equal variances assumed	,914	-,055	,506
	Equal variances not assumed	,897	-,055	,416
Perfil_Total_094	Equal variances assumed	,467	,352	,482
	Equal variances not assumed	,229	,352	,287
Perfil_Total_095	Equal variances assumed	,180	,730	,539
	Equal variances not assumed	,102	,730	,423
Perfil_Total_096	Equal variances assumed	,399	,372	,438
	Equal variances not assumed	,206	,372	,286
Perfil_Total_097	Equal variances assumed	,253	,524	,455
	Equal variances not assumed	,071	,524	,280
Perfil_Total_098	Equal variances assumed	,025	1,390	,607
	Equal variances not assumed	,002	1,390	,394
Perfil_Total_099	Equal variances assumed	,247	,671	,575
	Equal variances not assumed	,203	,671	,505
Perfil_Total_100	Equal variances assumed	,360	,510	,554
	Equal variances not assumed	,298	,510	,474

## Independent Samples Test

		t-test for Equality of Means	
		95% Confidence Interval of the Difference	
		Lower	Upper
Perfil_Total_091	Equal variances assumed	-,640	1,826
	Equal variances not assumed	-,497	1,683
Perfil_Total_092	Equal variances assumed	-,842	1,279
	Equal variances not assumed	-,738	1,175
Perfil_Total_093	Equal variances assumed	-1,063	,954
	Equal variances not assumed	-,935	,826
Perfil_Total_094	Equal variances assumed	-,607	1,312
	Equal variances not assumed	-,233	,938
Perfil_Total_095	Equal variances assumed	-,345	1,805
	Equal variances not assumed	-,160	1,621
Perfil_Total_096	Equal variances assumed	-,501	1,245
	Equal variances not assumed	-,219	,963
Perfil_Total_097	Equal variances assumed	-,383	1,432
	Equal variances not assumed	-,048	1,097
Perfil_Total_098	Equal variances assumed	,181	2,600
	Equal variances not assumed	,579	2,202
Perfil_Total_099	Equal variances assumed	-,475	1,818
	Equal variances not assumed	-,403	1,745
Perfil_Total_100	Equal variances assumed	-,593	1,614
	Equal variances not assumed	-,497	1,518